

## MEM Single-lever mixer - Platinum

MEM

33 800 682 Product version from 3/1/2023



- 7-7/8" Projection
- Swiveling spout 360°
- Optional restricted swivel available with swivel limiter set 12 820 970 90
- Aerated stream
- Total height 13-3/8"
- Height to aerator/spout outlet 8-5/8"
- 1-3/8" hole diameter
- 2 x pressure hose with 3/8" compression fitting
- Water flow rate limited to max. 1.5 gpm
- lead-free
- This product can help a building meet the requirements of Green Building Rating Systems, e.g. LEED®, BREEAM®, DGNB

(ADA)

Combination with side spray set or profi side spray set not possible.

	Platinum	33 800 682-08 0010
	Chrome	33 800 682-00 0010
	Brushed Platinum	33 800 682-06 0010
	Durabronze (23kt Gold)	33 800 682-09 0010
	Dark Chrome	33 800 682-19 0010
	Brushed Durabronze (23kt Gold)	33 800 682-28 0010
	Matte Black	33 800 682-33 0010
	Brushed Bronze	33 800 682-42 0010
	Brushed Champagne (22kt Gold)	33 800 682-46 0010
	Champagne (22kt Gold)	33 800 682-47 0010
	Brushed Chrome	33 800 682-93 0010
	Brushed Dark Platinum	33 800 682-99 0010

### Recommended article

**Swivel limiter set -**

12 820 970 90



### Recommended article

**Soap dispenser without flange - Platinum**

82 424 970-08



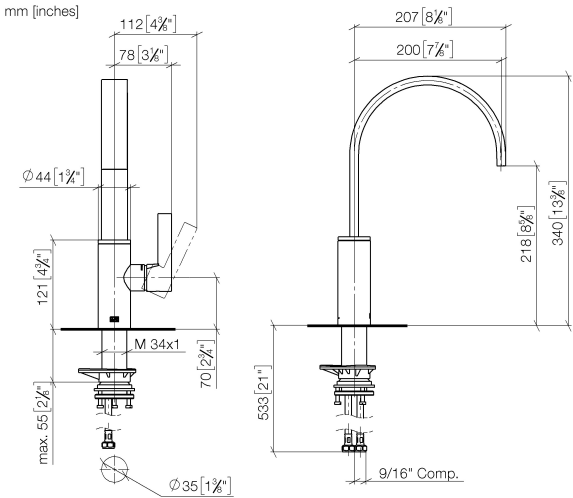
### Recommended article

**AIR SWITCH operating button, trim parts only - Platinum**

10 713 970-08



33 800 682    Product version from 3/1/2023

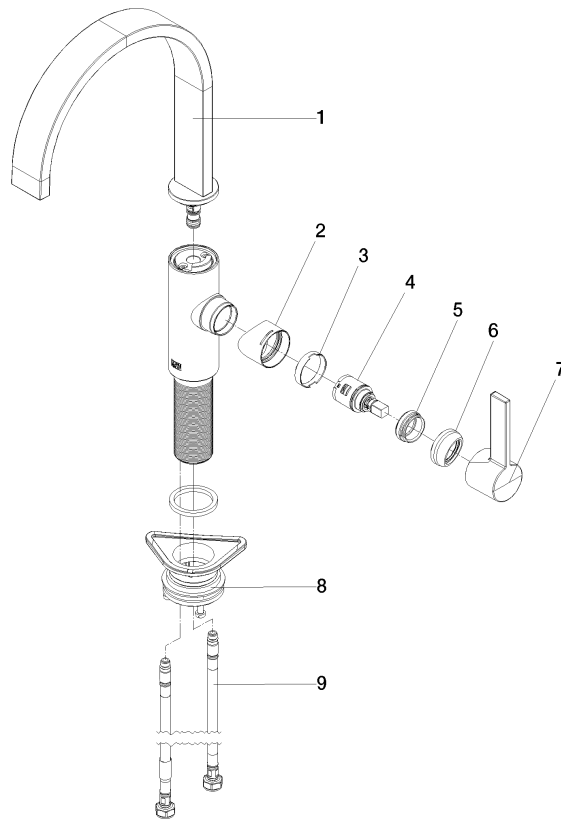


Codes & Standards

ADA	ASME A112.18.1	California Energy Commission (CEC)	cUPC
NSF372	NSF61		

Certificates and sustainability

IAPMO_6397	IAPMO_N-4976	IAPMO_4976 (	
------------	--------------	--------------	--



## Spare parts list

Number	Item Number	Designation	Number of units	Lead time
9	04 30 04 103 00 90	hose	2.00	2
1	90 28 22 332 01-08	spout	1.00	40
5	09 24 04 266 90	nut	1.00	2
6	90 28 30 052 00-08	cover	1.00	40
8	04 23 10 044 08 90	fixing set	1.00	2
4	90 15 05 042 00 90	cartridge	1.00	2
3	90 23 10 128 00 90	nut	1.00	2
7	90 20 86 004 00-08	handle	1.00	40
2	09 19 86 012-08	cover	1.00	60