

ELIO Single-lever mixer - Brushed Dark Platinum

ELIO

33 800 790 Product version from 5/31/2010 to 5/15/2020



- 9-1/4" Projection
- Swiveling spout 360°
- Spout with 20° pivoting tip
- Aerated stream
- Total height 13-1/4"
- Height to aerator/spout outlet 11-3/4"
- 1-3/8" hole diameter
- 2 x pressure hose with 3/8" compression fitting
- Water flow rate limited to max. 1.5 gpm
- lead-free
- This product can help a building meet the requirements of Green Building Rating Systems, e.g. LEED®, BREEAM®, DGNB

(ADA)

Combination with side spray set or profi side spray set not possible.

Recommended article

**AIR SWITCH operating button,
trim parts only - Brushed Dark
Platinum**

10 713 970-99

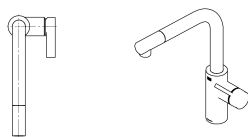
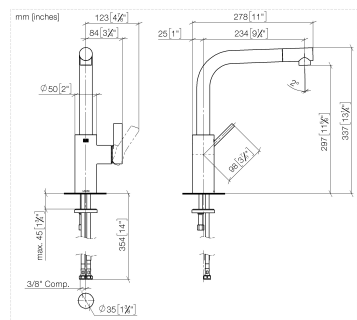




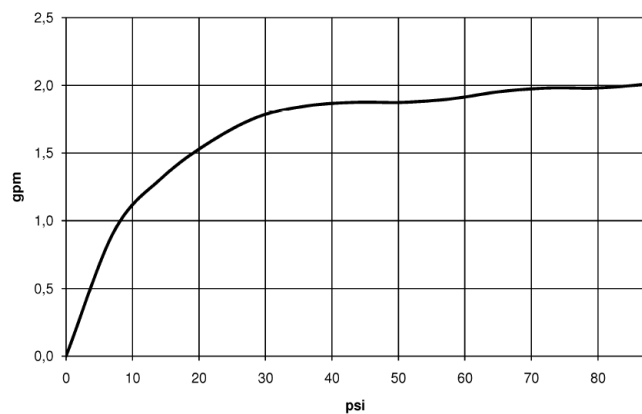
ELIO Single-lever mixer - Brushed Dark Platinum

ELIO

33 800 790 Product version from 5/31/2010 to 5/15/2020



Flow rate chart



Codes & Standards

ADA	ASME A112.18.1	California Energy Commission (CEC)	cUPC
NSF372	NSF61		



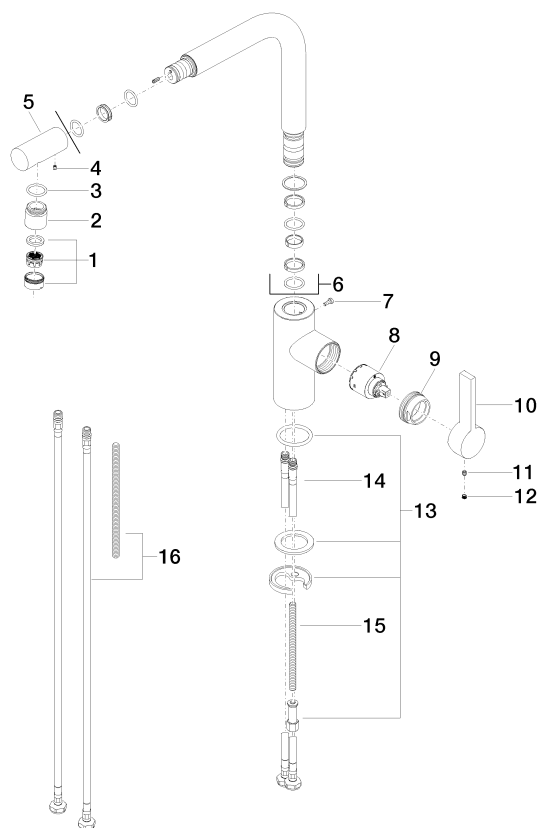
ELIO Single-lever mixer - Brushed Dark Platinum

ELIO

33 800 790 Product version from 5/31/2010 to 5/15/2020

Certificates and sustainability

IAPMO_N-4976 IAPMO_6397 IAPMO_4976 (



Spare parts list

Number	Item Number	Designation	Number of units	Lead time
1	90 23 01 026 08-99	aerator	1.00	20
13	04 30 11 038 75 90	fixing set	1.00	2
10	09 20 79 040-99	handle	1.00	20
7	09 30 30 054 90	screw	1.00	2
5	09 24 04 163 10-99	nipple	1.00	20
2	09 24 04 164 10-99	nipple	1.00	20
3	09 14 10 100 90	seal	1.00	2
16	12 803 970-90 0010	Extension set -	1.00	60
4	09 31 11 044 90	pin	1.00	2
14	04 30 04 106 00 90	hose	2.00	2
9	09 24 04 141-99	nut	1.00	20
15	09 31 11 091 90	pin	1.00	2
6	90 28 22 185 00-99	spout	1.00	20
11	90 31 11 030 00 90	pin	1.00	2
12	90 31 20 109 00 90	plug	1.00	2
8	90 15 05 045 00 90	cartridge	1.00	2