



- 8" Projection
- Swiveling spout 360°
- Aerated stream
- Total height 12-3/8"
- Height to aerator/spout outlet 8-1/2"
- 1-3/8" hole diameter
- 2 x pressure hose with 3/8" compression fitting
- Water flow rate limited to max. 1.5 gpm
- lead-free
- This product can help a building meet the requirements of Green Building Rating Systems, e.g. LEED®, BREEAM®, DGNB

(ADA)
Combination with side spray set or profi side spray set not possible.

	Chrome	33 800 809-00 0010
	Brushed Platinum	33 800 809-06 0010
	Platinum	33 800 809-08 0010
	Durabrass (23kt Gold)	33 800 809-09 0010
	Dark Chrome	33 800 809-19 0010
	Brushed Durabrass (23kt Gold)	33 800 809-28 0010
	Matte Black	33 800 809-33 0010
	Brushed Bronze	33 800 809-42 0010
	Brushed Champagne (22kt Gold)	33 800 809-46 0010
	Champagne (22kt Gold)	33 800 809-47 0010
	Brushed Chrome	33 800 809-93 0010
	Brushed Dark Platinum	33 800 809-99 0010

Recommended article

VAIA Soap dispenser with flange - Chrome 82 434 809-00

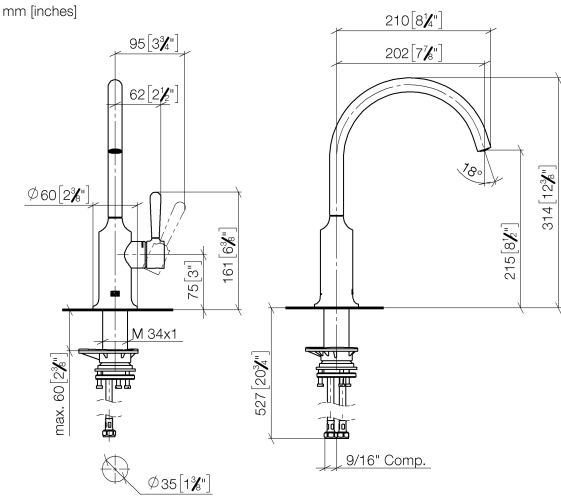


Recommended article

VAIA AIR SWITCH operating button, trim parts only - Chrome 10 713 809-00



33 800 809 Product version from 7/1/2023



Codes & Standards

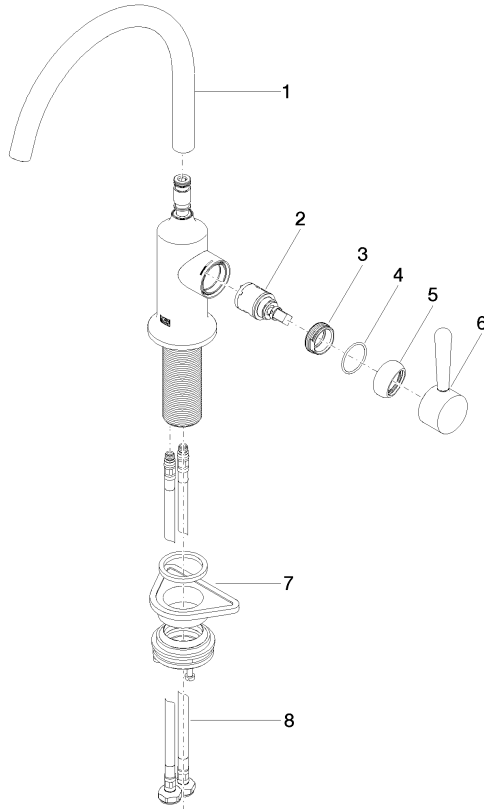
ADA	ASME A112.18.1	California Energy Commission (CEC)	cUPC
NSF372	NSF61		

Certificates and sustainability

IAPMO_N-4976

IAPMO_6397

IAPMO_4976 (



Spare parts list

Number	Item Number	Designation	Number of units	Lead time
1	90 28 22 313 00-00	spout	1.00	10
3	09 24 04 266 90	nut	1.00	2
4	09 14 10 091 90	seal	1.00	2
5	90 28 30 052 00-00	cover	1.00	10
6	90 20 80 050 00-00	handle	1.00	10
7	04 23 10 044 08 90	fixing set	1.00	2
2	90 15 05 042 00 90	cartridge	1.00	2
8	04 30 04 103 00 90	hose	2.00	2