

VAIA BAR TAP Single-lever mixer - Platinum
VAIA

33 805 809
Product version from 7/1/2023



- 6-5/8" Projection
  - Center to center "
  - Swiveling spout 360°
  - Aerated stream
  - Total height 12"
  - 8-7/8" height to aerator/spout outlet
  - 1-3/8" hole diameter
  - 2 x pressure hose with 3/8" compression fitting
  - Water flow rate limited to max. 1.5 gpm
  - lead-free
  - This product can help a building meet the requirements of Green Building Rating Systems, e.g. LEED®, BREEAM®, DGNB
- (ADA)
- Combination with side spray set or profi side spray set not possible.

	Platinum	33 805 809-08 0010
	Chrome	33 805 809-00 0010
	Brushed Platinum	33 805 809-06 0010
	Durabronze (23kt Gold)	33 805 809-09 0010
	Dark Chrome	33 805 809-19 0010
	Brushed Durabronze (23kt Gold)	33 805 809-28 0010
	Matte Black	33 805 809-33 0010
	Brushed Bronze	33 805 809-42 0010
	Brushed Champagne (22kt Gold)	33 805 809-46 0010
	Champagne (22kt Gold)	33 805 809-47 0010
	Brushed Chrome	33 805 809-93 0010
	Brushed Dark Platinum	33 805 809-99 0010

Recommended article

VAIA Soap dispenser with flange - 82 434 809-08  
Platinum

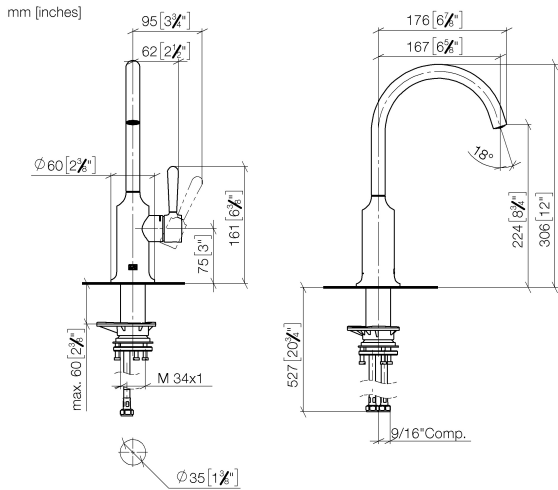


Recommended article

VAIA AIR SWITCH operating 10 713 809-08  
button, trim parts only - Platinum



33 805 809    Product version from 7/1/2023

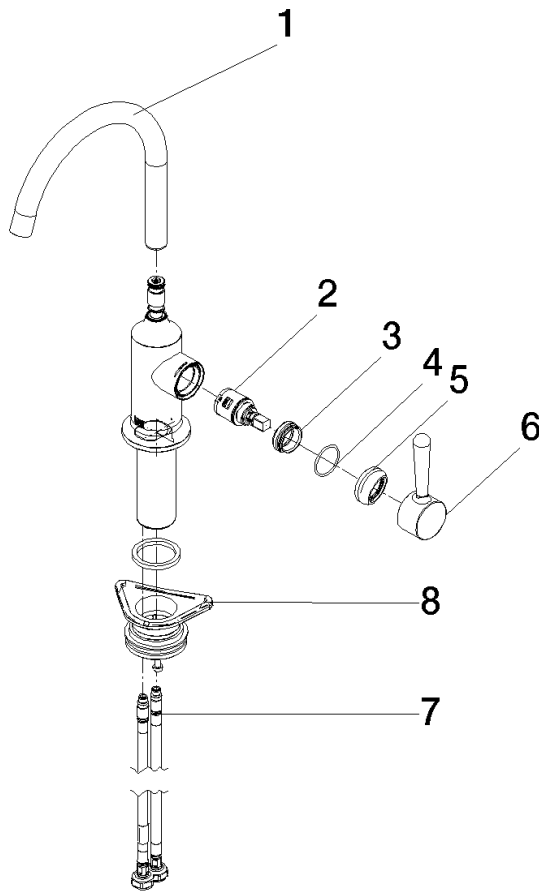


Codes & Standards			
ADA	ASME A112.18.1	California Energy Commission (CEC)	cUPC
NSF372	NSF61		

Certificates and sustainability		
IAPMO_N-4976	IAPMO_6397	IAPMO_4976 (

33 805 809 Product version from 7/1/2023

Parts for other  
finishes can be found  
here: [Chrome](#)



## Spare parts list

Number	Item Number	Designation	Number of units	Lead time
7	04 30 04 103 00 90	hose	2.00	2
6	90 20 80 050 00-08	handle	1.00	40
4	09 14 10 091 90	seal	1.00	2
8	04 23 10 044 08 90	fixing set	1.00	2
1	90 28 22 311 00-08	spout	1.00	40
2	90 15 05 042 00 90	cartridge	1.00	2
5	90 28 30 052 00-08	cover	1.00	40
3	09 24 04 266 90	nut	1.00	2