

TARA ULTRA BAR TAP Single-lever mixer - Brushed Platinum

TARA ULTRA

33 805 875 Product version up to 5/15/2020



- 6-1/2" Projection
 - Center to center "
 - Swiveling spout 360°
 - Laminar stream
 - Total height 11-7/8"
 - 7-3/8" height to aerator/spout outlet
 - 1-3/8" hole diameter
 - 2 x pressure hose with 3/8" compression fitting
 - Water flow rate limited to max. 1.5 gpm
 - lead-free
 - This product can help a building meet the requirements of Green Building Rating Systems, e.g. LEED®, BREEAM®, DGNB
- (ADA)
- Combination with side spray set or profi side spray set not possible.

	Brushed Platinum	33 805 875-06 0010
	Chrome	33 805 875-00 0010
	Platinum	33 805 875-08 0010
	Durabronze (23kt Gold)	33 805 875-09 0010
	Dark Chrome	33 805 875-19 0010
	Brushed Durabronze (23kt Gold)	33 805 875-28 0010
	Matte Black	33 805 875-33 0010
	Brushed Bronze	33 805 875-42 0010
	Brushed Champagne (22kt Gold)	33 805 875-46 0010
	Champagne (22kt Gold)	33 805 875-47 0010
	Brushed Chrome	33 805 875-93 0010
	Brushed Dark Platinum	33 805 875-99 0010

Recommended article

AIR SWITCH operating button, trim parts only - Brushed Platinum

10 713 970-06



Recommended article

Soap dispenser without flange - Brushed Platinum

82 424 970-06

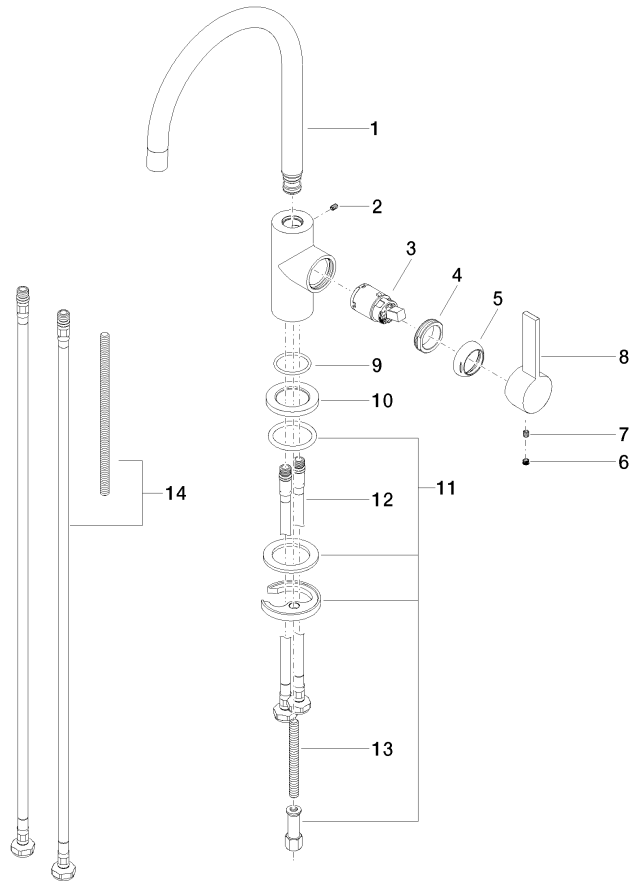


ADA	California Energy Commission (CEC)	NSF372	NSF61
-----	------------------------------------	--------	-------

IAPMO_N-4976 IAPMO_6397

33 805 875 Product version up to 5/15/2020

Parts for other
finishes can be found
here: [Chrome](#)



Spare parts list

Number	Item Number	Designation	Number of units	Lead time
11	04 30 11 038 64 90	fixing set	1.00	2
2	09 31 11 008 90	pin	1.00	2
1	90 28 22 206 01-06	spout	1.00	10
13	09 31 11 011 90	pin	1.00	2
12	04 30 04 106 00 90	hose	2.00	2
3	90 15 05 041 00 90	cartridge	1.00	2
10	09 27 85 001-06	rosette	1.00	10
9	09 14 10 118 90	seal	1.00	2
14	12 803 970-90 0010	Extension set -	1.00	60
8	09 20 88 051-06	handle	1.00	10
5	09 24 04 204-06	cover	1.00	10
4	09 24 04 130-07	nut	1.00	30
6	90 31 20 109 00 90	plug	1.00	2
7	90 31 11 030 00 90	pin	1.00	2