

TARA BAR TAP Single-lever mixer - Brushed Bronze

TARA

33 805 888



- 6-1/2" Projection
  - Swiveling spout 360°
  - Aerated stream
  - Total height 11-7/8"
  - Height to aerator/spout outlet 7-1/4"
  - 1-3/8" hole diameter
  - 2 x pressure hose with 3/8" compression fitting
  - Water flow rate limited to max. 1.5 gpm
  - lead-free
  - This product can help a building meet the requirements of Green Building Rating Systems, e.g. LEED®, BREEAM®, DGNB
- (ADA)
- Combination with side spray set or profi side spray set not possible.

	Brushed Bronze	33 805 888-42 0010
	Chrome	33 805 888-00 0010
	Brushed Platinum	33 805 888-06 0010
	Platinum	33 805 888-08 0010
	Durabrass (23kt Gold)	33 805 888-09 0010
	Dark Chrome	33 805 888-19 0010
	Brushed Durabrass (23kt Gold)	33 805 888-28 0010
	Matte Black	33 805 888-33 0010
	Brushed Champagne (22kt Gold)	33 805 888-46 0010
	Champagne (22kt Gold)	33 805 888-47 0010
	Brushed Chrome	33 805 888-93 0010
	Brushed Dark Platinum	33 805 888-99 0010

Recommended article

AIR SWITCH operating button, trim parts only - Brushed Bronze

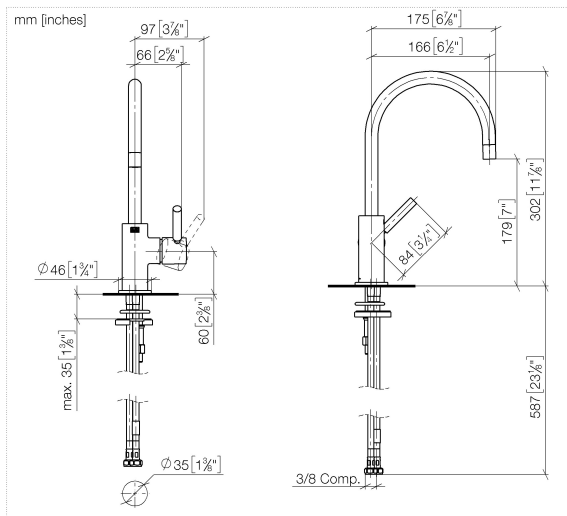


Recommended article

Soap dispenser with flange - Brushed Bronze



33 805 888



### Codes & Standards

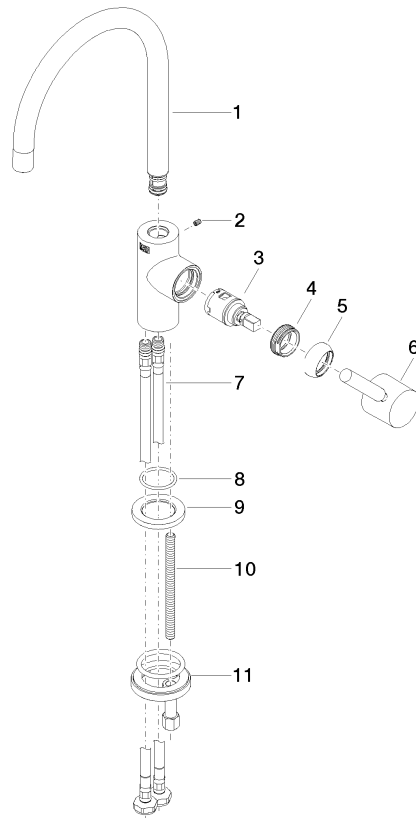
ADA	ASME A112.18.1	California Energy Commission (CEC)	cUPC
NSF372	NSF61		

### Certificates and sustainability

IAPMO\_6397      IAPMO\_N-4976      IAPMO\_4976 (

33 805 888

Parts for other  
finishes can be found  
here: [Chrome](#)



## Spare parts list

Number	Item Number	Designation	Number of units	Lead time
9	09 27 85 001-42	rosette	1.00	60
1	90 28 22 393 01-42	spout	1.00	30
2	09 31 11 008 90	pin	1.00	2
5	09 28 30 021-42	cover	1.00	60
4	09 24 04 266 90	nut	1.00	2
11	04 30 11 038 64 90	fixing set	1.00	2
3	90 15 05 042 00 90	cartridge	1.00	2
7	04 30 04 107 00 90	hose	2.00	2
10	09 31 11 012 90	pin	1.00	2
8	09 14 10 118 90	seal	1.00	2
6	90 20 66 003 00-42	handle	1.00	30