

## TARA Single-lever mixer - Brushed Dark Platinum

TARA

33 815 888 Product version from 5/31/2010 to 10/27/2020



- 9-1/4" Projection
- Swiveling spout 360°
- Aerated stream
- Total height 15-3/4"
- Height to aerator/spout outlet 9"
- 1-3/8" hole diameter
- 2 x pressure hose with 3/8" compression fitting
- Water flow rate limited to max. 1.5 gpm
- lead-free
- This product can help a building meet the requirements of Green Building Rating Systems, e.g. LEED®, BREEAM®, DGNB

(ADA)

Combination with side spray set or profi side spray set not possible.

	Brushed Dark Platinum	33 815 888-99 0010
	Chrome	33 815 888-00 0010
	Brushed Platinum	33 815 888-06 0010
	Platinum	33 815 888-08 0010
	Durabrass (23kt Gold)	33 815 888-09 0010
	Dark Chrome	33 815 888-19 0010
	Brushed Durabrass (23kt Gold)	33 815 888-28 0010
	Matte Black	33 815 888-33 0010
	Brushed Bronze	33 815 888-42 0010
	Brushed Champagne (22kt Gold)	33 815 888-46 0010
	Champagne (22kt Gold)	33 815 888-47 0010
	Brushed Chrome	33 815 888-93 0010

### Recommended article

**AIR SWITCH operating button, trim parts only - Brushed Dark Platinum**

10 713 970-99



### Recommended article

**Soap dispenser with flange - Brushed Dark Platinum**

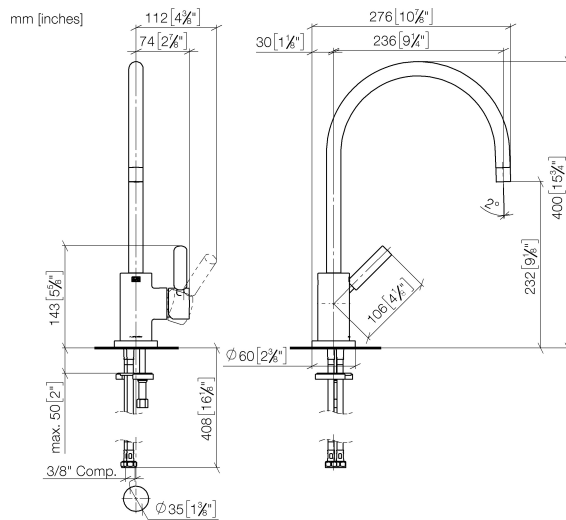
82 444 970-99



## TARA Single-lever mixer - Brushed Dark Platinum

TARA

33 815 888 Product version from 5/31/2010 to 10/27/2020



### Codes & Standards

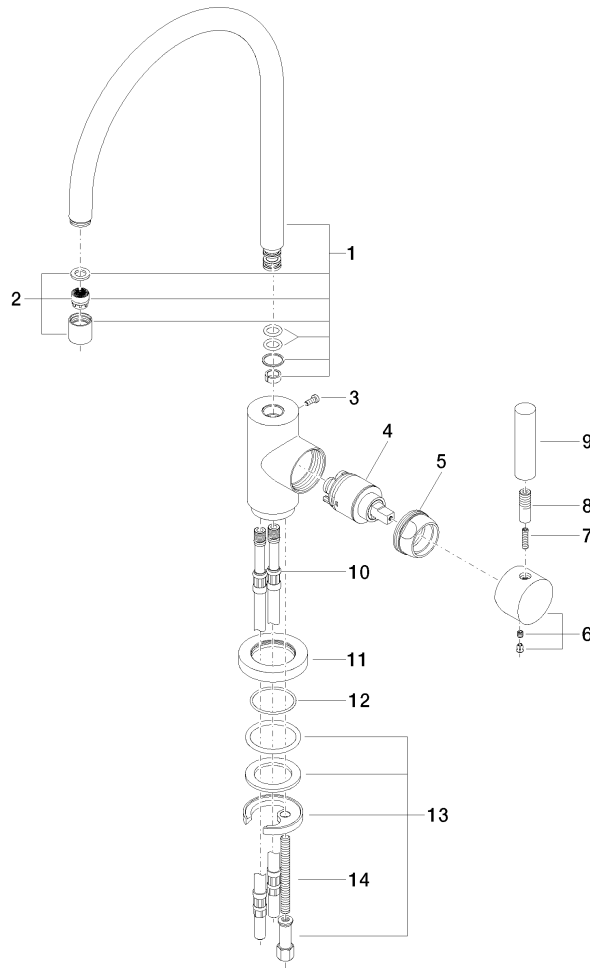
ADA	ASME A112.18.1	California Energy Commission (CEC)	cUPC
NSF372	NSF61		

### Certificates and sustainability

IAPMO\_N-4976 IAPMO\_6397 IAPMO\_4976 (

33 815 888 Product version from 5/31/2010 to 10/27/2020

Parts for other  
finishes can be found  
here: [Chrome](#)



## Spare parts list

Number	Item Number	Designation	Number of units	Lead time
9	11 170 880-99	handle	1.00	20
13	04 30 11 038 00 90	fixing set	1.00	2
14	09 31 11 011 90	pin	1.00	2
11	09 28 10 055-99	rosette	1.00	20
5	09 24 04 107-99	nut	1.00	20
3	09 30 30 054 90	screw	1.00	2
1	90 28 22 049 10-99	spout	1.00	-
Spare part can no longer be ordered, please order the replacement item				
10	04 30 04 044 00 90	hose	2.00	60
12	09 14 10 034 90	seal	1.00	2
7	09 31 11 010 90	pin	1.00	2
2	90 23 01 028 02-99	aerator	1.00	-
Spare part can no longer be ordered, please order the replacement item				
6	90 20 88 040 00-99	handle	1.00	20
4	90 15 05 065 00 90	cartridge	1.00	2
8	90 24 04 048 00-99	nipple	1.00	20