

TARA ULTRA Single-lever mixer - Chrome

TARA ULTRA

33 816 875 Product version from 5/31/2010 to 7/25/2018



- 9-1/2" Projection
- Swiveling spout 360°
- Aerated stream
- Total height 15-1/2"
- Height to aerator/spout outlet 9-1/2"
- 1-3/8" hole diameter
- 2 x pressure hose with 3/8" compression fitting
- Water flow rate limited to max. 1.5 gpm
- lead-free
- This product can help a building meet the requirements of Green Building Rating Systems, e.g. LEED®, BREEAM®, DGNB

(ADA)

Combination with side spray set or profi side spray set not possible.

	Chrome	33 816 875-00 0010
	Brushed Platinum	33 816 875-06 0010
	Platinum	33 816 875-08 0010
	Durabronze (23kt Gold)	33 816 875-09 0010
	Dark Chrome	33 816 875-19 0010
	Brushed Durabronze (23kt Gold)	33 816 875-28 0010
	Matte Black	33 816 875-33 0010
	Brushed Bronze	33 816 875-42 0010
	Brushed Champagne (22kt Gold)	33 816 875-46 0010
	Champagne (22kt Gold)	33 816 875-47 0010
	Brushed Chrome	33 816 875-93 0010
	Brushed Dark Platinum	33 816 875-99 0010

Recommended article

Soap dispenser without flange - Chrome 82 424 970-00



Recommended article

AIR SWITCH operating button, trim parts only - Chrome 10 713 970-00

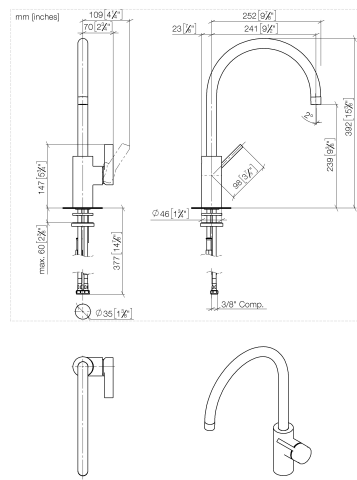




TARA ULTRA Single-lever mixer - Chrome

TARA ULTRA

33 816 875 Product version from 5/31/2010 to 7/25/2018

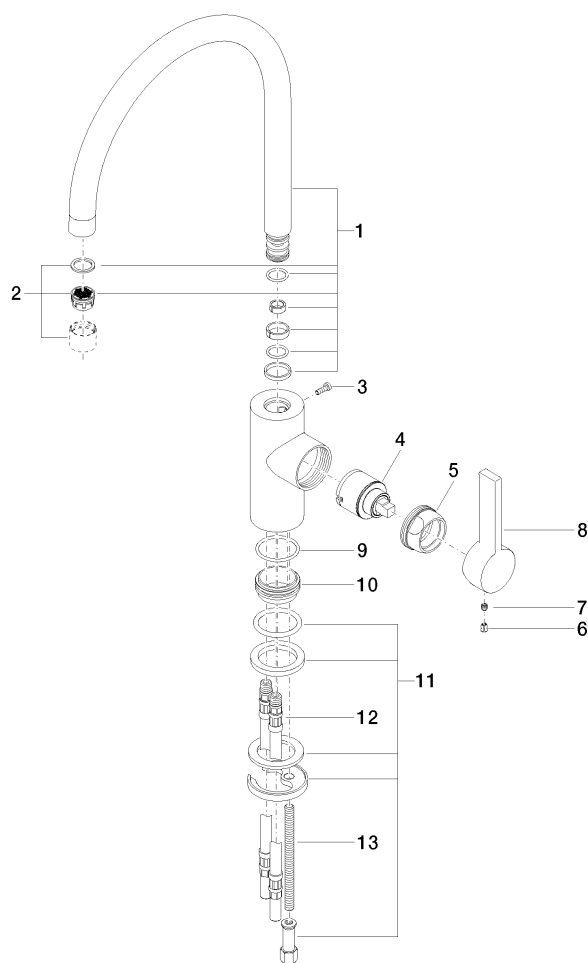


Codes & Standards

ADA	ASME A112.18.1	California Energy Commission (CEC)	cUPC
NSF372	NSF61		

Certificates and sustainability

IAPMO_N-4976	IAPMO_6397	IAPMO_4976 (
--------------	------------	--------------	--



Spare parts list

Number	Item Number	Designation	Number of units	Lead time
1	90 28 22 202 03-00	spout	1.00	10
13	09 31 11 012 90	pin	1.00	2
3	09 30 30 080 90	screw	1.00	2
9	09 14 10 119 90	seal	1.00	2
11	04 30 11 085 88 90	fixing set	1.00	2
6	09 31 20 017 90	plug	1.00	2
5	09 24 04 107-00	nut	1.00	10
2	90 23 01 004 02-00	aerator	1.00	10
8	09 20 79 040-00	handle	1.00	10
12	04 30 04 045 00 90	hose	2.00	2
10	09 28 10 109-07	ring	1.00	30
7	90 31 11 030 00 90	pin	1.00	2
4	90 15 05 045 00 90	cartridge	1.00	2