

TARA ULTRA Single-lever mixer - Platinum

TARA ULTRA

33 816 875 Product version from 5/31/2010 to 7/25/2018



- 9-1/2" Projection
- Swiveling spout 360°
- Aerated stream
- Total height 15-1/2"
- Height to aerator/spout outlet 9-1/2"
- 1-3/8" hole diameter
- 2 x pressure hose with 3/8" compression fitting
- Water flow rate limited to max. 1.5 gpm
- lead-free
- This product can help a building meet the requirements of Green Building Rating Systems, e.g. LEED®, BREEAM®, DGNB

(ADA)

Combination with side spray set or profi side spray set not possible.

| | | |
|---|--------------------------------|--------------------|
|  | Platinum | 33 816 875-08 0010 |
|  | Chrome | 33 816 875-00 0010 |
|  | Brushed Platinum | 33 816 875-06 0010 |
|  | Durabronze (23kt Gold) | 33 816 875-09 0010 |
|  | Dark Chrome | 33 816 875-19 0010 |
|  | Brushed Durabronze (23kt Gold) | 33 816 875-28 0010 |
|  | Matte Black | 33 816 875-33 0010 |
|  | Brushed Bronze | 33 816 875-42 0010 |
|  | Brushed Champagne (22kt Gold) | 33 816 875-46 0010 |
|  | Champagne (22kt Gold) | 33 816 875-47 0010 |
|  | Brushed Chrome | 33 816 875-93 0010 |
|  | Brushed Dark Platinum | 33 816 875-99 0010 |

Recommended article

Soap dispenser without flange - Platinum 82 424 970-08



Recommended article

Soap dispenser without flange - Platinum 82 424 970-08



Recommended article

AIR SWITCH operating button, trim parts only - Platinum 10 713 970-08

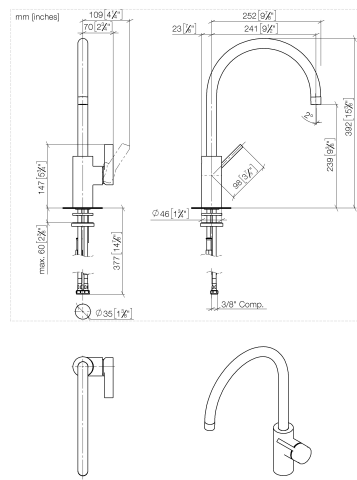


Recommended article

AIR SWITCH operating button, trim parts only - Platinum 10 713 970-08



33 816 875 Product version from 5/31/2010 to 7/25/2018

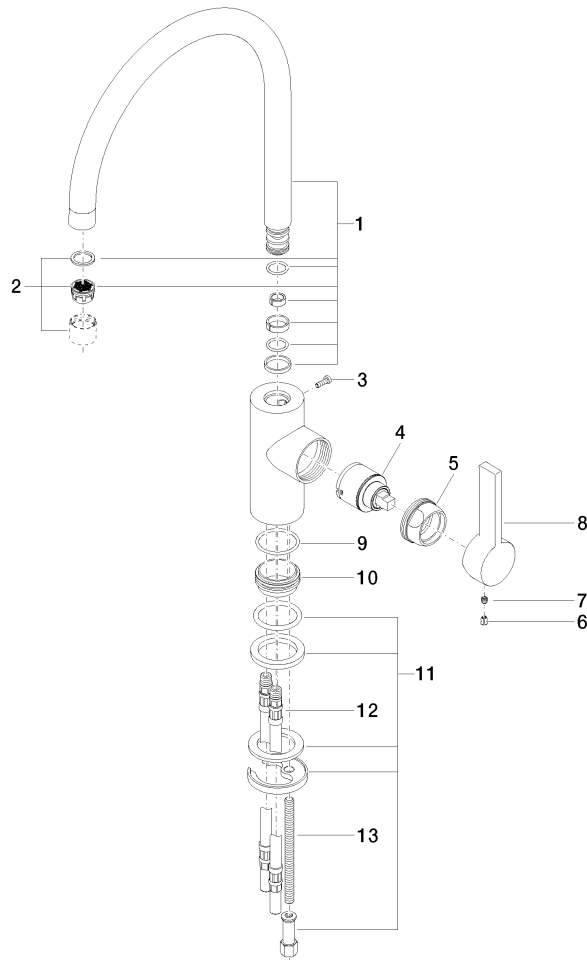


| Codes & Standards | | | |
|-------------------|----------------|------------------------------------|------|
| ADA | ASME A112.18.1 | California Energy Commission (CEC) | cUPC |
| NSF372 | NSF61 | | |

| Certificates and sustainability | | |
|---------------------------------|------------|--------------|
| IAPMO_N-4976 | IAPMO_6397 | IAPMO_4976 (|

33 816 875 Product version from 5/31/2010 to 7/25/2018

Parts for other
finishes can be found
here: [Chrome](#)



Spare parts list

| Number | Item Number | Designation | Number of units | Lead time |
|--------|-----------------------|-------------|-----------------|-----------|
| | 13 09 31 11 012 90 | pin | 1.00 | 2 |
| | 9 09 14 10 119 90 | seal | 1.00 | 2 |
| | 3 09 30 30 080 90 | screw | 1.00 | 2 |
| | 6 09 31 20 017 90 | plug | 1.00 | 2 |
| | 2 90 23 01 004 02-08 | aerator | 1.00 | 40 |
| | 5 09 24 04 107-08 | nut | 1.00 | 40 |
| | 11 04 30 11 085 88 90 | fixing set | 1.00 | 2 |
| | 8 09 20 79 040-08 | handle | 1.00 | 40 |
| | 1 90 28 22 202 03-08 | spout | 1.00 | 40 |
| | 12 04 30 04 045 00 90 | hose | 2.00 | 2 |
| | 10 09 28 10 109-07 | ring | 1.00 | 30 |
| | 7 90 31 11 030 00 90 | pin | 1.00 | 2 |
| | 4 90 15 05 045 00 90 | cartridge | 1.00 | 2 |