

TARA ULTRA PIVOT Single-lever mixer - Brushed Champagne (22kt Gold)

TARA ULTRA

33 845 875 Product version from 10/27/2020



- 21-3/4" Projection
- Swiveling spout 360°
- Aerated stream
- Total height 14-5/8"
- Height to aerator/spout outlet 11-3/8"
- Flange 2-1/8"
- 1-1/8" hole diameter
- 2 x pressure hose with 3/8" compression fitting
- Water flow rate limited to max. 1.5 gpm
- lead-free
- This product can help a building meet the requirements of Green Building Rating Systems, e.g. LEED®, BREEAM®, DGNB

(ADA)

Combination with side spray set or profi side spray set not possible.

| | | |
|---|--------------------------------|--------------------|
|  | Brushed Champagne (22kt Gold) | 33 845 875-46 0010 |
|  | Chrome | 33 845 875-00 0010 |
|  | Brushed Platinum | 33 845 875-06 0010 |
|  | Platinum | 33 845 875-08 0010 |
|  | Durabronze (23kt Gold) | 33 845 875-09 0010 |
|  | Dark Chrome | 33 845 875-19 0010 |
|  | Brushed Durabronze (23kt Gold) | 33 845 875-28 0010 |
|  | Brushed Bronze | 33 845 875-42 0010 |
|  | Champagne (22kt Gold) | 33 845 875-47 0010 |
|  | Brushed Chrome | 33 845 875-93 0010 |
|  | Brushed Dark Platinum | 33 845 875-99 0010 |

Recommended article

**Soap dispenser with flange -
Brushed Champagne (22kt Gold)**

82 444 970-46



Recommended article

**AIR SWITCH operating button,
trim parts only - Brushed
Champagne (22kt Gold)**

10 713 970-46

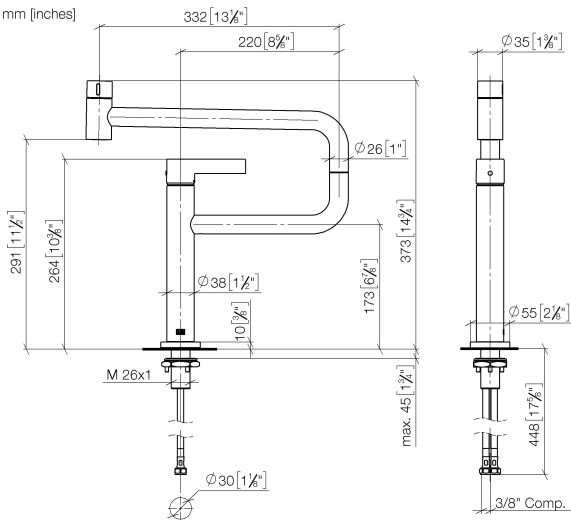




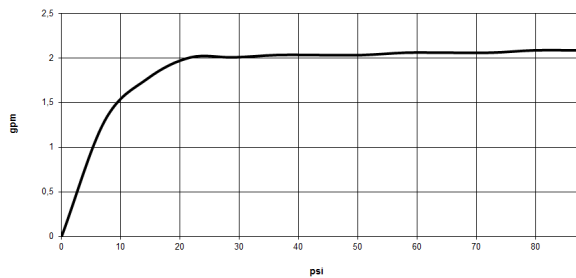
TARA ULTRA PIVOT Single-lever mixer - Brushed Champagne (22kt Gold)

TARA ULTRA

33 845 875 Product version from 10/27/2020



Flow rate chart



Codes & Standards

ADA

California Energy
Commission
(CEC)

NSF372

NSF61



TARA ULTRA PIVOT Single-lever mixer - Brushed Champagne (22kt Gold)

TARA ULTRA

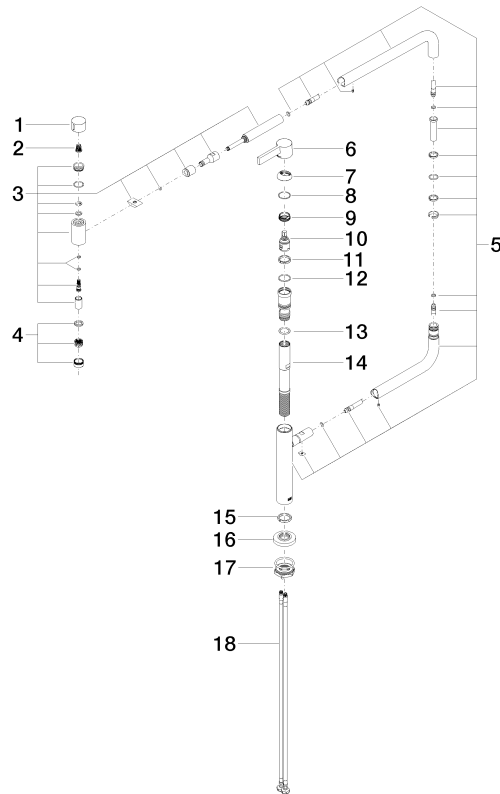
33 845 875 Product version from 10/27/2020

Certificates and sustainability

IAPMO_N-4976

IAPMO_6397

Parts for other
finishes can be found
here: [Chrome](#)



Spare parts list

| Number | Item Number | Designation | Number of units | Lead time |
|--------|--------------------|-------------|-----------------|-----------|
| 9 | 09 24 04 266 90 | nut | 1.00 | 2 |
| 8 | 09 14 10 091 90 | seal | 1.00 | 2 |
| 6 | 90 20 87 004 00-46 | handle | 1.00 | 30 |
| 13 | 09 14 10 081 90 | seal | 1.00 | 2 |
| 5 | 90 28 22 257 00-46 | joint | 1.00 | 30 |
| 10 | 90 15 05 042 00 90 | cartridge | 1.00 | 2 |
| 4 | 90 23 01 026 08-46 | aerator | 1.00 | 30 |
| 15 | 09 28 10 159 90 | ring | 1.00 | 2 |
| 11 | 09 28 10 156 90 | ring | 1.00 | 2 |
| 18 | 04 30 04 103 00 90 | hose | 2.00 | 2 |
| 16 | 09 27 87 033-46 | rosette | 1.00 | 30 |
| 3 | 90 19 87 001 00-46 | spout | 1.00 | 30 |
| 14 | 09 30 01 126 90 | connection | 1.00 | 2 |
| 7 | 09 28 30 013-46 | cover | 1.00 | 30 |
| 1 | 09 20 62 025-46 | handle | 1.00 | 30 |
| 2 | 90 12 12 002 00 90 | fixing cap | 1.00 | 2 |
| 17 | 04 30 11 085 87 90 | fixing set | 1.00 | 2 |
| 12 | 90 14 10 063 00 90 | seal | 1.00 | 2 |