

SYNC Profi single-lever mixer - Durabronze (23kt Gold)

33 865 895 Product version from 2/4/2019



- 7-7/8" Projection
- Flexible silicone hose with large operating range of up to 13-3/4"
- Swiveling 360°
- Optional restricted swivel available with swivel limiter set 12 821 970 90
- Aerated stream and spray mode
- Total height 17-3/4"
- Height to aerator/spout outlet 4-5/8"
- 1-3/8" hole diameter
- 2 x pressure hose with 3/8" compression fitting
- Sprayface with descaling system
- Water flow rate limited to max. 1.5 gpm
- lead-free
- This product can help a building meet the requirements of Green Building Rating Systems, e.g. LEED®, BREEAM®, DGNB

(ADA)

Internal backflow preventer.

Switch back and forth between aerator and spray mode while water is running.

	Durabronze (23kt Gold)	33 865 895-09 0010
	Chrome	33 865 895-00 0010
	Brushed Platinum	33 865 895-06 0010
	Platinum	33 865 895-08 0010
	Dark Chrome	33 865 895-19 0010
	Brushed Durabronze (23kt Gold)	33 865 895-28 0010
	Matte Black	33 865 895-33 0010
	Brushed Bronze	33 865 895-42 0010
	Brushed Champagne (22kt Gold)	33 865 895-46 0010
	Champagne (22kt Gold)	33 865 895-47 0010
	Brushed Chrome	33 865 895-93 0010
	Brushed Dark Platinum	33 865 895-99 0010

Recommended article

Swivel limiter set - 12 821 970 90



Recommended article

Soap dispenser without flange - Durabronze (23kt Gold) 82 424 970-09



Recommended article

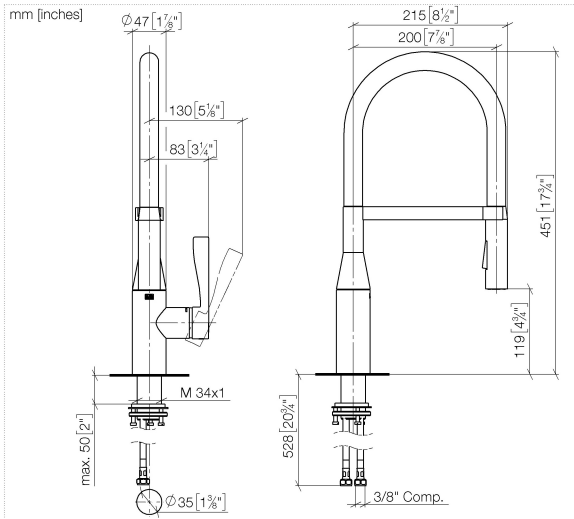
AIR SWITCH operating button, trim parts only - Durabronze (23kt Gold) 10 713 970-09



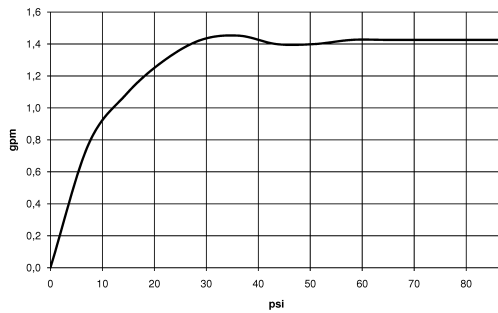


SYNC Profi single-lever mixer - Durabronz (23kt Gold)

33 865 895 Product version from 2/4/2019



Flow rate chart



Codes & Standards

ADA

ASME
A112.18.1/CSA
B125.1

California Energy
Commission
(CEC)

NSF/ANSI 372

NSF/ANSI/CAN
61

NSF372

NSF61



SYNC Profi single-lever mixer - Durabronz (23kt Gold)

33 865 895 Product version from 2/4/2019

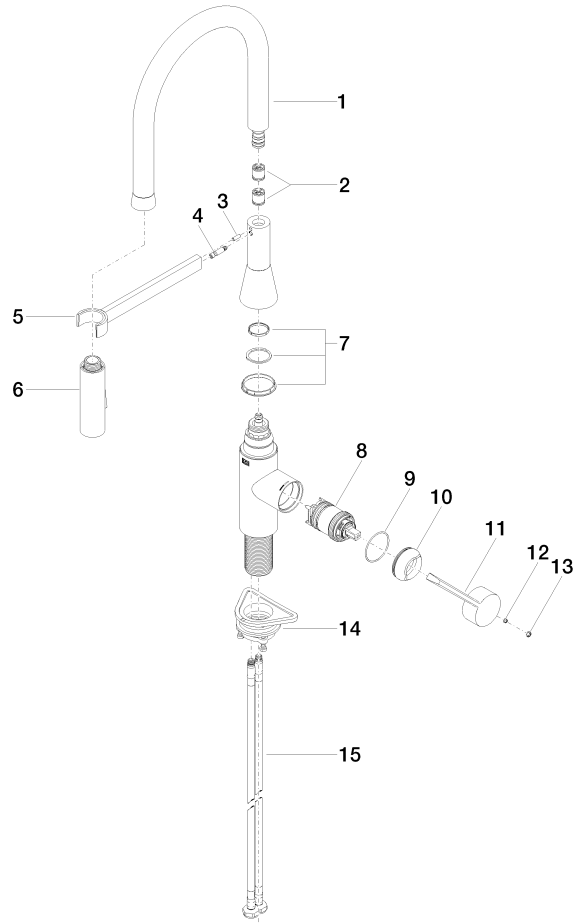
Certificates

IAPMO_N-4976

IAPMO_6397

SYNC Profi single-lever mixer - Durabronz (23kt Gold)

33 865 895 Product version from 2/4/2019



Spare parts list

Number	Item Number	Designation	Number of units	Lead time
1	90 30 02 100 00-09	hose	1	40
2	90 23 01 141 00 90	back-flow preventer	1	2
3	09 31 11 040 90	pin	1	2
4	09 31 11 209 90	pin	1	2
5	90 17 20 045 00-09	holder	1	40
6	04 12 11 150 00 90	shower	1	2
7	90 28 10 161 00 90	set	1	2
8	90 15 05 064 05 90	cartridge	1	2
9	09 14 10 190 90	seal	1	2
10	09 28 30 030-09	cover	1	40
11	09 20 89 020-09	handle	1	40
12	90 31 11 063 00 90	pin	1	2
13	90 31 20 087 00-09	plug	1	40
14	04 30 11 040 00 90	fixing set	1	2
15	04 30 04 103 00 90	hose	2	2