

SYNC Single-lever mixer pull-down with spray function - Matte Black

SYNC

33 870 895 Product version from 2/26/2015



- 9-1/2" Projection
- Swiveling spout 360°
- Optional restricted swivel available with swivel limiter set 12 821 970 90
- Laminar and spray function
- Total height 17-1/2"
- 9-1/2" height to aerator/spout outlet
- 1-3/8" hole diameter
- 2 x pressure hose with 3/8" compression fitting
- 59" metal shower hose
- Sprayface with descaling system
- Water flow rate limited to max. 1.5 gpm
- lead-free
- Spray types can be changed while the water is running
- This product can help a building meet the requirements of Green Building Rating Systems, e.g. LEED®, BREEAM®, DGNB

(ADA)

Internal backflow preventer.

Push button locks into spray mode when pressed. To switch back to laminar flow the water must be turned off.

	Matte Black	33 870 895-33 0010
	Chrome	33 870 895-00 0010
	Brushed Platinum	33 870 895-06 0010
	Platinum	33 870 895-08 0010
	Durabronze (23kt Gold)	33 870 895-09 0010
	Dark Chrome	33 870 895-19 0010
	Brushed Durabronze (23kt Gold)	33 870 895-28 0010
	Brushed Bronze	33 870 895-42 0010
	Brushed Champagne (22kt Gold)	33 870 895-46 0010
	Champagne (22kt Gold)	33 870 895-47 0010
	Brushed Chrome	33 870 895-93 0010
	Brushed Dark Platinum	33 870 895-99 0010

Recommended article

Swivel limiter set -

12 821 970 90



Recommended article

AIR SWITCH operating button, trim parts only - Matte Black

10 713 970-33



Recommended article

Soap dispenser without flange - Matte Black

82 424 970-33



Recommended article

Soap dispenser without flange - Matte Black

82 424 970-33



Recommended article

AIR SWITCH operating button, trim parts only - Matte Black

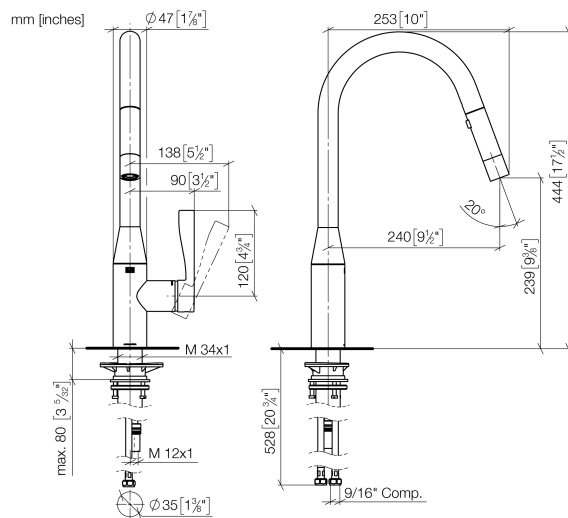
10 713 970-33



SYNC Single-lever mixer pull-down with spray function - Matte Black

SYNC

33 870 895 Product version from 2/26/2015

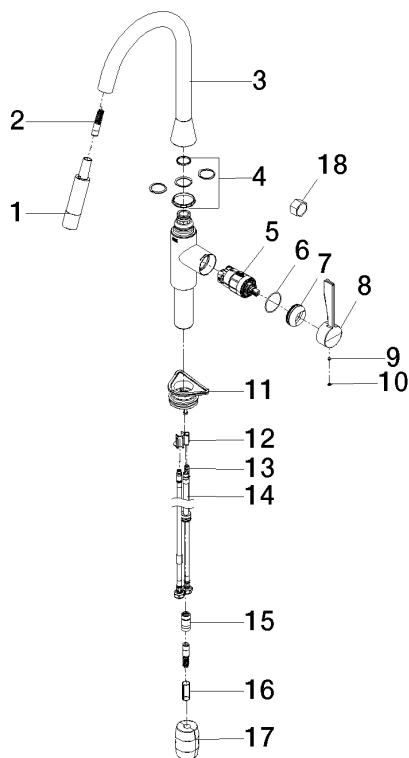


Codes & Standards

ADA	ASME A112.18.1	California Energy Commission (CEC)	cUPC
NSF372	NSF61		

Certificates and sustainability

IAPMO_N-4976 IAPMO_6397 IAPMO_4976 (



Spare parts list

Number	Item Number	Designation	Number of units	Lead time
	17 04 21 50 010 00 90	accessories	1.00	2
	3 90 28 22 302 00-33	spout	1.00	30
	9 90 31 11 063 00 90	pin	1.00	2
	16 09 30 03 038 90	hose	1.00	2
	10 90 31 20 087 00-33	plug	1.00	30
	6 09 14 10 190 90	seal	1.00	2
	15 90 24 03 253 01 90	adaptor	1.00	2
	7 09 28 30 030-33	cover	1.00	2
	8 09 20 89 020-33	handle	1.00	30
	18 90 30 09 031 00 90	key	1.00	2
	4 12 821 970 90	Swivel limiter set -	1.00	2
	14 04 28 20 067 00 90	pipe	1.00	2
	12 09 20 93 056 90	insert	1.00	2
	13 04 30 04 103 00 90	hose	2.00	2
	1 90 12 11 184 00-33	shower	1.00	30
	11 04 30 11 040 00 90	fixing set	1.00	2
	5 90 15 05 046 05 90	cartridge	1.00	2
	2 04 30 02 120 00-33	hose	1.00	-

Spare part can no longer be ordered, please order the replacement item