

SYNC Single-lever mixer pull-down with spray function - Durabrand (23kt Gold)

SYNC

33 875 895 Product version from 2/26/2015



- 9-1/2" Projection
- Swiveling spout 360°
- Optional restricted swivel available with swivel limiter set 12 821 970 90
- Laminar and spray function
- Total height 16-1/2"
- 9-1/2" height to aerator/spout outlet
- 1-3/8" hole diameter
- 2 x pressure hose with 3/8" compression fitting
- 59" metal shower hose
- Sprayface with descaling system
- Water flow rate limited to max. 1.5 gpm
- lead-free
- Spray types can be changed while the water is running
- This product can help a building meet the requirements of Green Building Rating Systems, e.g. LEED®, BREEAM®, DGNB

(ADA)

Internal backflow preventer.

Push button locks into spray mode when pressed. To switch back to laminar flow the water must be turned off.

	Durabrand (23kt Gold)	33 875 895-09 0010
	Chrome	33 875 895-00 0010
	Brushed Platinum	33 875 895-06 0010
	Platinum	33 875 895-08 0010
	Dark Chrome	33 875 895-19 0010
	Brushed Durabrand (23kt Gold)	33 875 895-28 0010
	Matte Black	33 875 895-33 0010
	Brushed Bronze	33 875 895-42 0010
	Brushed Champagne (22kt Gold)	33 875 895-46 0010
	Champagne (22kt Gold)	33 875 895-47 0010
	Brushed Chrome	33 875 895-93 0010
	Brushed Dark Platinum	33 875 895-99 0010

Recommended article

Swivel limiter set -

12 821 970 90



Recommended article

Soap dispenser without flange - Durabrand (23kt Gold)

82 424 970-09



Recommended article

AIR SWITCH operating button, trim parts only - Durabrand (23kt Gold)

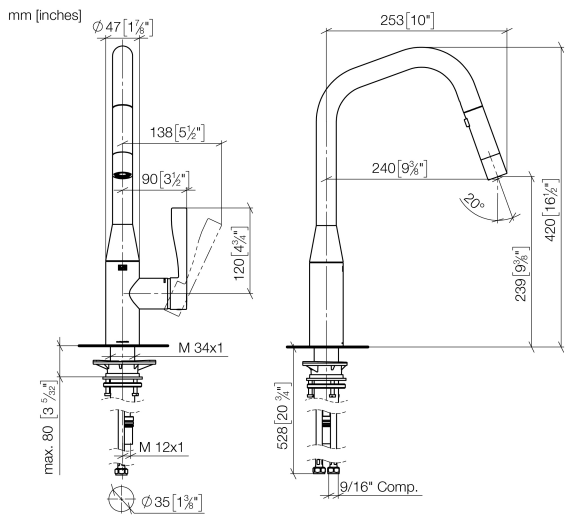
10 713 970-09



SYNC Single-lever mixer pull-down with spray function - Durabrass (23kt Gold)

SYNC

33 875 895 Product version from 2/26/2015

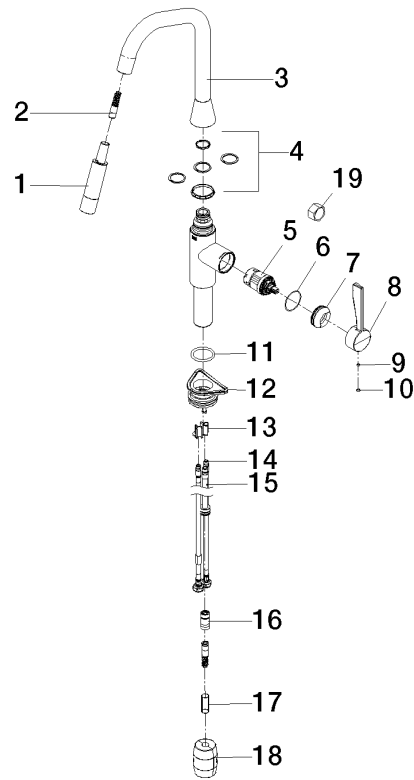


Codes & Standards

ADA	California Energy Commission (CEC)	NSF372	NSF61
-----	--	--------	-------

Certificates and sustainability

IAPMO_N-4976 IAPMO_6397





SYNC Single-lever mixer pull-down with spray function - Durabrass (23kt Gold)

SYNC

33 875 895 Product version from 2/26/2015

Spare parts list

Number	Item Number	Designation	Number of units	Lead time
10	90 31 20 087 00-09	plug	1.00	40
18	04 21 50 010 00 90	accessories	1.00	2
16	90 24 03 253 01 90	adaptor	1.00	2
3	90 28 22 301 00-09	spout	1.00	40
8	09 20 89 020-09	handle	1.00	40
17	09 30 03 038 90	hose	1.00	2
6	09 14 10 190 90	seal	1.00	2
7	09 28 30 030-09	cover	1.00	40
9	90 31 11 063 00 90	pin	1.00	2
19	90 30 09 031 00 90	key	1.00	2
15	04 28 20 067 00 90	pipe	1.00	2
4	12 821 970 90	Swivel limiter set -	1.00	2
2	04 30 02 120 00-09	hose	1.00	-
Spare part can no longer be ordered, please order the replacement item				
11	09 14 10 036 90	seal	1.00	2
14	04 30 04 103 00 90	hose	2.00	2
1	90 12 11 184 00-09	shower	1.00	-
Spare part can no longer be ordered, please order the replacement item				
13	09 20 93 056 90	insert	1.00	2
5	90 15 05 046 05 90	cartridge	1.00	2
12	04 30 11 040 00 90	fixing set	1.00	2