

## SYNC Single-lever mixer pull-down with spray function - Brushed Bronze

SYNC

33 875 895 Product version from 2/26/2015



- 9-1/2" Projection
- Swiveling spout 360°
- Optional restricted swivel available with swivel limiter set 12 821 970 90
- Laminar and spray function
- Total height 16-1/2"
- 9-1/2" height to aerator/spout outlet
- 1-3/8" hole diameter
- 2 x pressure hose with 3/8" compression fitting
- 59" metal shower hose
- Sprayface with descaling system
- Water flow rate limited to max. 1.5 gpm
- lead-free
- Spray types can be changed while the water is running
- This product can help a building meet the requirements of Green Building Rating Systems, e.g. LEED®, BREEAM®, DGNB

(ADA)

Internal backflow preventer.

Push button locks into spray mode when pressed. To switch back to laminar flow the water must be turned off.

	Brushed Bronze	33 875 895-42 0010
	Chrome	33 875 895-00 0010
	Brushed Platinum	33 875 895-06 0010
	Platinum	33 875 895-08 0010
	Durabronze (23kt Gold)	33 875 895-09 0010
	Dark Chrome	33 875 895-19 0010
	Brushed Durabronze (23kt Gold)	33 875 895-28 0010
	Matte Black	33 875 895-33 0010
	Brushed Champagne (22kt Gold)	33 875 895-46 0010
	Champagne (22kt Gold)	33 875 895-47 0010
	Brushed Chrome	33 875 895-93 0010
	Brushed Dark Platinum	33 875 895-99 0010

### Recommended article

**Swivel limiter set -**

12 821 970 90



### Recommended article

**Soap dispenser without flange -  
Brushed Bronze**

82 424 970-42



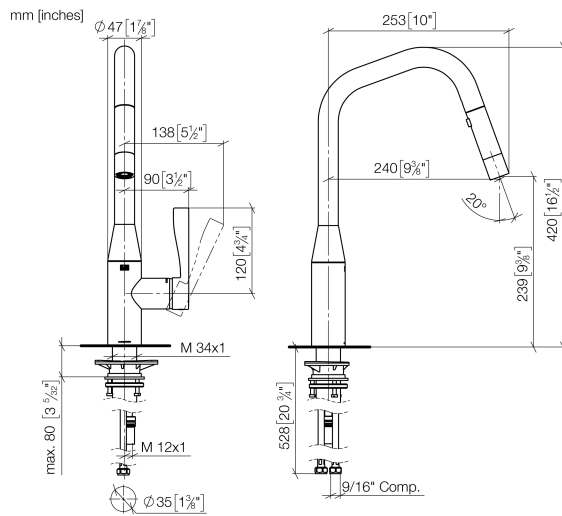
### Recommended article

**AIR SWITCH operating button,  
trim parts only - Brushed Bronze**

10 713 970-42



33 875 895 Product version from 2/26/2015

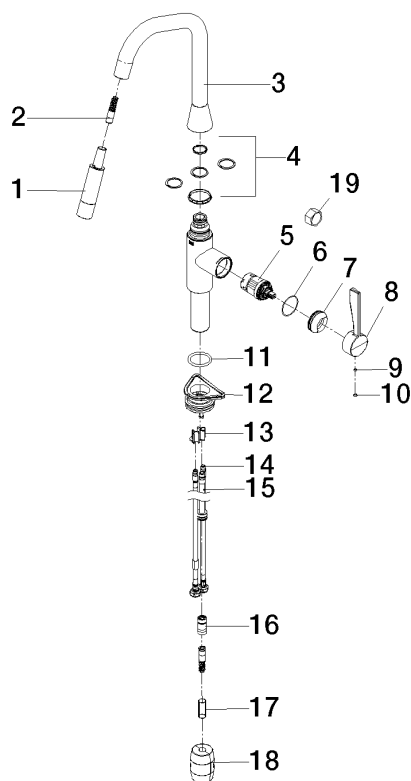


### Codes & Standards

ADA	ASME A112.18.1	California Energy Commission (CEC)	cUPC
NSF372	NSF61		

### Certificates and sustainability

IAPMO\_N-4976 IAPMO\_6397 IAPMO\_4976 (



## Spare parts list

Number	Item Number	Designation	Number of units	Lead time
10	90 31 20 087 00-42	plug	1.00	30
3	90 28 22 301 00-42	spout	1.00	30
17	09 30 03 038 90	hose	1.00	2
18	04 21 50 010 00 90	accessories	1.00	2
6	09 14 10 190 90	seal	1.00	2
16	90 24 03 253 01 90	adaptor	1.00	2
9	90 31 11 063 00 90	pin	1.00	2
7	09 28 30 030-42	cover	1.00	60
19	90 30 09 031 00 90	key	1.00	2
8	09 20 89 020-42	handle	1.00	60
4	12 821 970 90	Swivel limiter set -	1.00	2
11	09 14 10 036 90	seal	1.00	2
1	90 12 11 184 00-42	shower	1.00	30
12	04 30 11 040 00 90	fixing set	1.00	2
5	90 15 05 046 05 90	cartridge	1.00	2
14	04 30 04 103 00 90	hose	2.00	2
13	09 20 93 056 90	insert	1.00	2
2	04 30 02 120 00-42	hose	1.00	-
Spare part can no longer be ordered, please order the replacement item				
15	04 28 20 067 00 90	pipe	1.00	2