

Exposed shower set with shower thermostat without hand shower - Chrome

34 460 979 Product version from 7/1/2023



- Projection 17-7/8"
- Rainshower
- Rain shower diameter 11-3/4"
- Rain shower with descaling system
- Rain shower water flow rate limited to max. 1.8 gpm (at 3 bar)
- Function from: 1.7 gpm
- Diverter with integrated volume control
- Flanges Ø 2-3/4"
- Height from center of faucet to bottom of rainhead 39-3/4"
- Height from center of faucet to top of shower arm 45-1/4"
- Center to center 5-7/8" ± 1/2"
- Metal shower hose 68-7/8" with anti-twist device
- 1/2" connection
- Slide bar
- Pipe diameter 7/8"
- with drip prevention
- This product reduces water consumption by 28% (compared to requirements of EPA '92)
- This product contributes to meeting the requirements of the LEED® Green Building Rating


Internal backflow preventer.

NOTE: Hand shower sold separately. Please see hand shower options under the miscellaneous articles section of each series.


Internal backflow preventer.

NOTE: Hand shower sold separately. Please see hand shower options under the miscellaneous articles section of each series.


Required article

	Rough-in adapter - •Please order 2 adapters	35 080 970-00 0010
---	---	-----------------------


Required article

	Rough-in adapter - •Please order 2 adapters	35 080 970-00 0010
---	---	-----------------------


Required article

	Hand shower FlowReduce - Chrome	28 016 979-00 0010
---	--	-----------------------

Required article

	Hand shower FlowReduce - Chrome	28 012 979-00 0010
---	--	-----------------------

Required article

	Hand shower FlowReduce - Chrome	28 018 979-00 0010
---	--	-----------------------

Required article

	SERIES-VARIOUS Hand shower FlowReduce - Chrome	28 027 979-00 0010
---	---	-----------------------

Required article

	SERIES-VARIOUS Hand shower FlowReduce - Chrome	28 029 979-00 0010
---	---	-----------------------

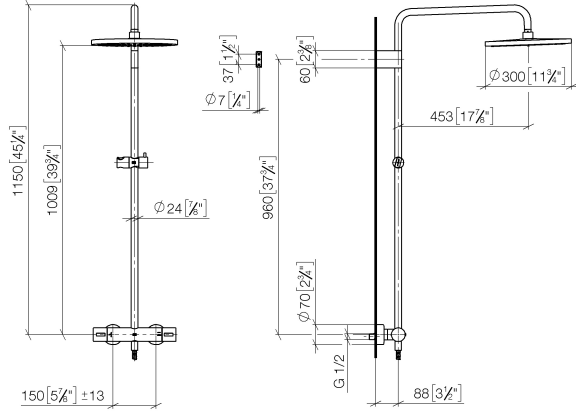
Required article

	SERIES-VARIOUS Hand shower FlowReduce - Chrome	28 025 979-00 0010
---	---	-----------------------

Exposed shower set with shower thermostat without hand shower - Chrome

34 460 979 Product version from 7/1/2023

mm [inches]
1:10



Flow rate chart



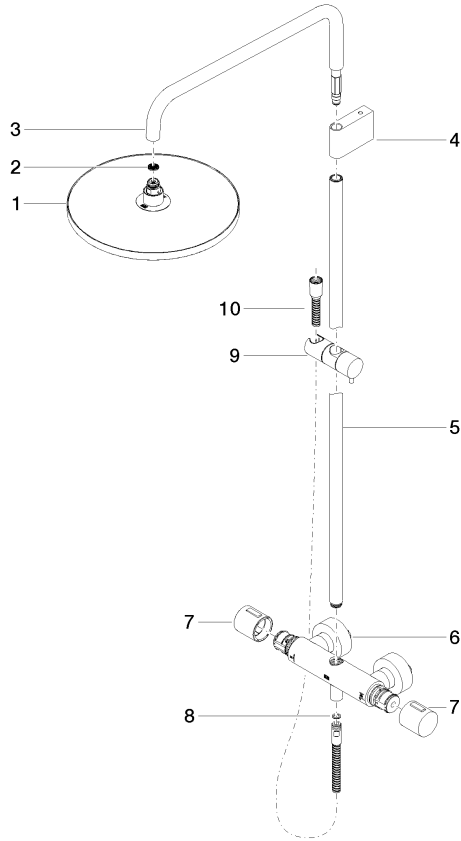
Codes & Standards

ASME
A112.18.1/CSA
B125.1

California Energy
Commission
(CEC)

Exposed shower set with shower thermostat without hand shower - Chrome

34 460 979 Product version from 7/1/2023



Spare parts list

Number	Item Number	Designation	Number of units	Lead time
1	04 12 05 091 10-00	shower	1	10
2	09 23 01 039 90	sieve	1	2
3	90 28 22 348 00-00	pipe	1	10
4	90 17 11 150 00-00	holder	1	10
5	90 28 22 349 00-00	pipe	1	10
6	04 17 01 250 00-00	connection	1	10
7	90 17 33 015 00-00	handle	2	10
8	90 14 20 026 00 90	seal	1	2
9	12 570 970-00	Slider - Chrome	1	10
10	28 322 970-00	Metal shower hose 1/2" x 3/8" x 68-7/8" - Chrome	1	2