

35 428 970



- integrated stop
- lead free compliant
- 2x back flow preventer
- 2x Connection 1/2" IT (cold/warm), DN 15
- 3x outlet 1/2"
- Mud guard
- Water protection
- Noise and heat insulation
- Center to center 2-3/4"
- suitable for xGRID (when using installation track + 1/2" recess depth)
- single flow function only

Only for combination with exposed trim parts 36
428 SSS-FF

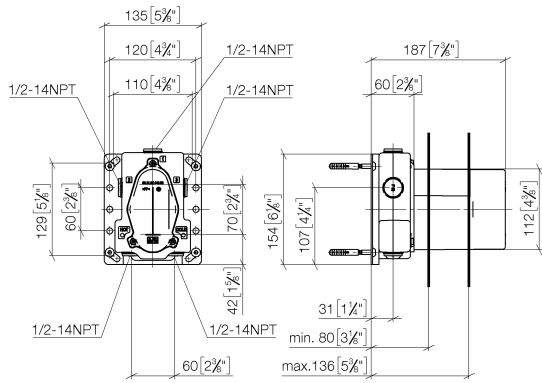
Only for combination with exposed trim parts 36
427 SSS-FF

Concealed thermostat for three-way outlets -

SERIES-VARIOUS

35 428 970

mm [inches]



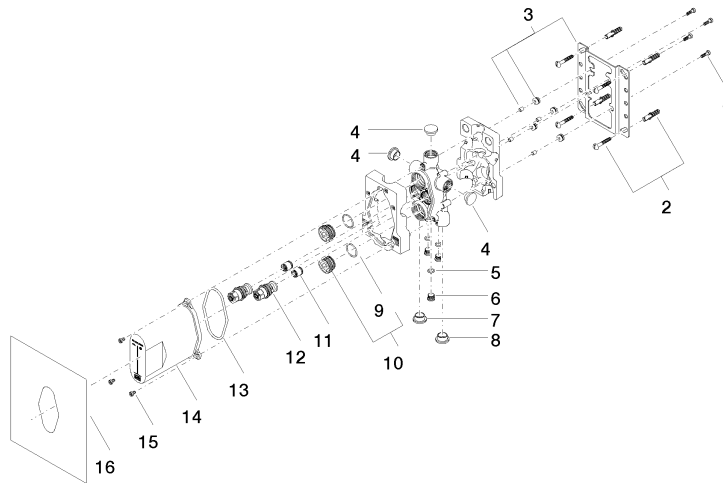
Codes & Standards

ASME A112.18.1 cUPC

Certificates and sustainability

IAPMO_4976 (

35 428 970



Spare parts list

Number	Item Number	Designation	Number of units	Lead time
8	09 31 20 094 90	plug	2.00	2
5	09 14 10 139 90	seal	2.00	2
3	04 17 20 127 00 90	holder	1.00	2
11	90 23 01 040 00 90	back-flow preventer	2.00	2
7	09 31 20 093 90	plug	2.00	2
9	09 14 10 112 90	seal	2.00	2
10	04 30 11 149 00 90	plug	2.00	2
1	09 30 30 171 90	screw	4.00	2
14	04 21 02 146 00 90	cap	1.00	2
16	04 14 03 080 00 90	gasket kit	1.00	2
6	09 31 20 039 10 90	plug	2.00	60
15	09 30 30 112 90	screw	3.00	2
4	09 31 20 092 90	plug	3.00	2
13	09 14 10 512 90	seal	1.00	2
2	04 30 31 024 01 90	fixing set	2.00	2
12	04 29 05 031 01 90	insert	2.00	2