

Concealed thermostat for three-way outlets

SERIES SPECIFIC

35 429 970 Product version from 1/1/2025



- integrated stop
- lead free compliant
- 2x back flow preventer
- 2x Connection 1/2" IT (cold/warm), DN 15
- 3x outlet 1/2"
- Mud guard
- Water protection
- Noise and heat insulation
- Center to center 2-3/4"
- suitable for xGRID (when using installation track + 1/2" recess depth)
- single flow function only

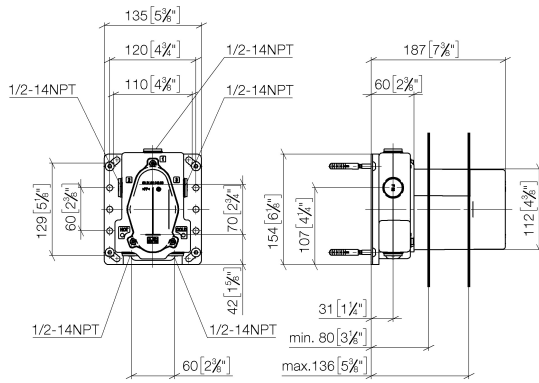
Combinable only with final assembly kits 36 427
SSS-FF / 36 428 SSS-FF.

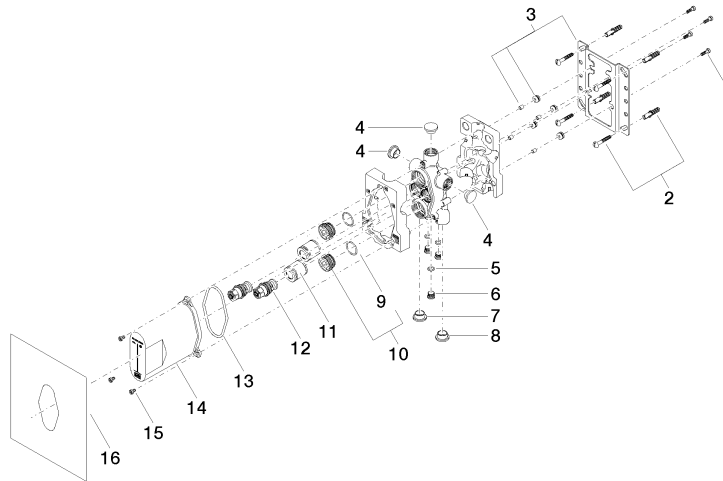
Concealed thermostat for three-way outlets

SERIES SPECIFIC

35 429 970 Product version from 1/1/2025

mm [inches]





Spare parts list

Number	Item Number	Designation	Number of units	Lead time
	14 04 21 02 146 00 90	cap	1.00	2
	11 90 23 01 040 00 90	back-flow preventer	1.00	2
	5 09 14 10 139 90	seal	1.00	2
	1 09 30 30 171 90	screw	1.00	2
	8 09 31 20 094 90	plug	1.00	2
	2 04 30 31 024 01 90	fixing set	1.00	2
	9 09 14 10 112 90	seal	1.00	2
	13 09 14 10 512 90	seal	1.00	2
	10 04 30 11 149 00 90	plug	1.00	2
	6 04 31 20 039 11 90	plug	1.00	2
	12 04 29 05 031 01 90	insert	1.00	2
	3 04 17 20 127 00 90	holder	1.00	2
	4 09 31 20 092 90	plug	1.00	2
	15 09 30 30 112 90	screw	1.00	2
	16 04 14 03 080 00 90	gasket kit	1.00	2
	7 09 31 20 093 90	plug	1.00	2