

xTOOL Concealed thermostat rough -

35 517 970 Product version from 1/1/2022



- brass, lead free
- 2x back flow preventer
- Integrated supply stops
- 2x connections 3/4" (hot/cold)
- female thread 3/4" connection
- Thermostat cartridge
- Mud guard
- Water protection
- Sound insulation

Recommended article

Extension 1-1/8" -

12 177 970 90



Recommended article

Extension 1-3/4" -

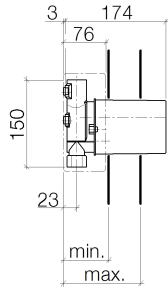
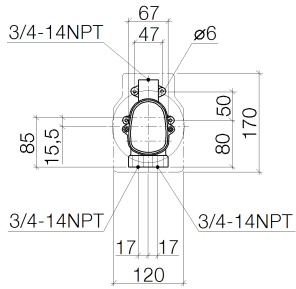
12 178 970 90





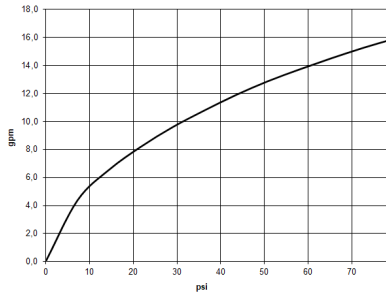
xTOOL Concealed thermostat rough -

35 517 970 Product version from 1/1/2022



Source	min	max
Circle	80	110
Lulu	80	110
Madison	80	110
Madison Flair	80	110
TARA LOGIC	80	110
Mets.O2	80	110
Soul	80	110
Square	80	110
Cult	80	110
L'Aura	80	110
Domicil	85	110
Just	80	155
LaFleur	95	160
SUPERNOVA	95	160
Symetria	95	160
VEQUE	95	160
Tara.	95	160
MEM	115	156
CL.1	115	156

Flow rate chart



35517970-900010 + 36416/417 xxx-FF

Codes & Standards

ASME A112.18.1

cUPC



xTOOL Concealed thermostat rough -

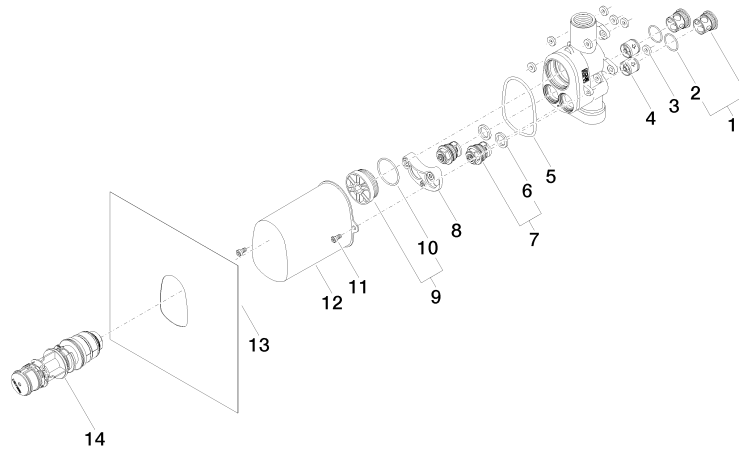
35 517 970 Product version from 1/1/2022

Certificates

IAPMO_4976 (

xTOOL Concealed thermostat rough -

35 517 970 Product version from 1/1/2022



Spare parts list

Number	Item Number	Designation	Number of units	Lead time
1	04 21 34 077 00 90	nipple	2	2
2	09 14 10 098 90	seal	2	2
3	04 14 05 045 00 90	set	8	2
4	90 23 01 045 00 90	back-flow preventer	2	2
5	09 14 10 189 90	seal	1	2
6	09 14 05 002 90	seal	2	2
7	90 29 05 031 00 90	insert	2	2
8	90 12 12 218 00 90	base	1	2
9	04 31 20 100 00 90	plug	1	2
10	09 14 10 111 90	seal	1	2
11	90 30 30 027 00 90	screw	2	2
12	09 21 02 103 90	cap	1	2
13	04 14 03 073 04 90	gasket kit	1	2
14	90 15 02 065 00 90	cartridge	1	2