




35 547 970

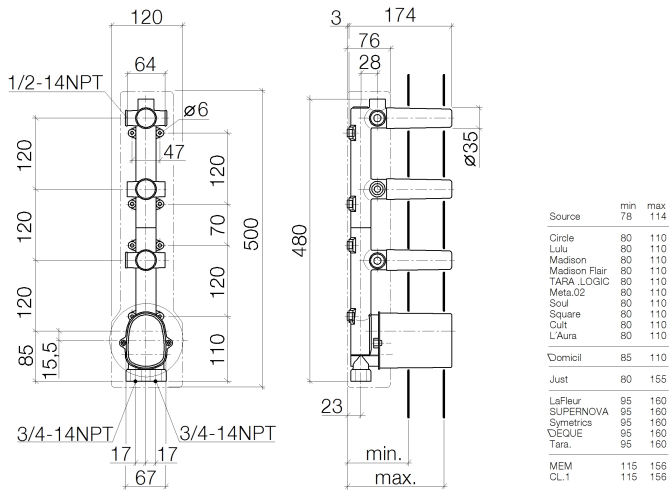
Product version up to 5/12/2021



- brass, lead free
- 2x back flow preventer
- Integrated supply stops
- 1/2" connection
- 2x connections 3/4" (hot/cold)
- Thermostat cartridge
- 2x Ceramic disc cartridge
- 3x Mud guard
- 2x Water protection
- Sound insulation
- Center to center 4-3/4"

| Recommended article | | Recommended article | |
|---|--|---|--|
| <div> <div> <div>Extension 1-1/8" -</div> <div>12 177 970 90</div> </div> <div>  </div> </div> | | <div> <div> <div>Extension 1-3/4" -</div> <div>12 178 970 90</div> </div> <div>  </div> </div> | |

35 547 970 Product version up to 5/12/2021

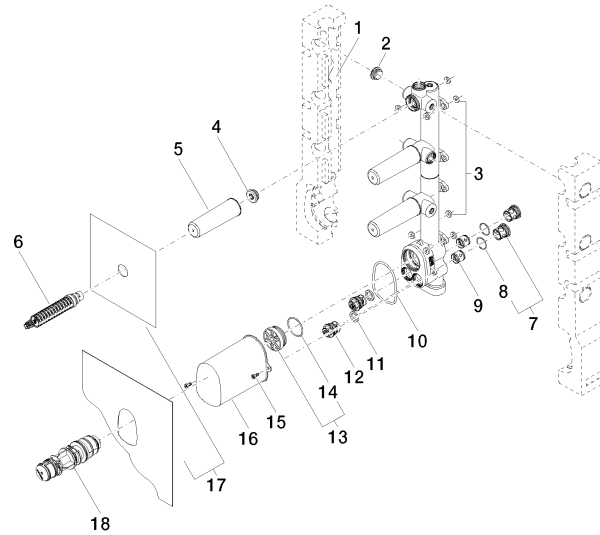


Codes & Standards

ASME A112.18.1 cUPC

Certificates and sustainability

IAPMO_4976 (



Spare parts list

| Number | Item Number | Designation | Number of units | Lead time |
|--------|--------------------|---------------------|-----------------|-----------|
| 2 | 04 31 20 062 10 90 | plug | 4.00 | 2 |
| 14 | 09 14 10 111 90 | seal | 1.00 | 2 |
| 3 | 04 14 05 045 00 90 | set | 1.00 | 2 |
| 7 | 04 21 34 077 00 90 | nipple | 2.00 | 2 |
| 16 | 09 21 02 103 90 | cap | 1.00 | 2 |
| 1 | 09 11 11 009 90 | accessories | 1.00 | 2 |
| 13 | 04 31 20 100 00 90 | plug | 1.00 | 2 |
| 9 | 90 23 01 045 00 90 | back-flow preventer | 2.00 | 2 |
| 4 | 04 31 20 006 00 90 | plug | 3.00 | 2 |
| 8 | 09 14 10 098 90 | seal | 2.00 | 2 |
| 6 | 90 90 03 143 00 90 | top | 3.00 | 2 |
| 11 | 09 14 05 002 90 | seal | 2.00 | 2 |
| 5 | 09 21 02 102 90 | cap | 3.00 | 2 |
| 18 | 90 15 02 065 00 90 | cartridge | 1.00 | 2 |
| 10 | 09 14 10 189 90 | seal | 1.00 | 2 |
| 17 | 04 14 03 073 07 90 | gasket kit | 1.00 | 2 |
| 15 | 90 30 30 027 00 90 | screw | 2.00 | 2 |
| 12 | 90 29 05 031 00 90 | insert | 2.00 | 2 |