





- brass, lead free
  - 2x female thread 3/4" connections
  - 3x outlet 1/2"
  - 2x female thread 1/2" outlet for additional valves
  - 4x Water protection
  - 4x Mud guard
  - Sound insulation
  - suitable for xGRID (when using installation track + 1/2" recess depth)
- Only to be used in combination with exposed trim parts 36 417 980-FF / 36 417 985-FF and 36 315 980-FF / 36 315 985-FF
- NOTE: Important for certain series! Due to minimum rough-in requirements, a framing of 2x6 studs may be needed.

Recommended article

	Extension 1-1/8" -	12 177 970 90
		

Recommended article

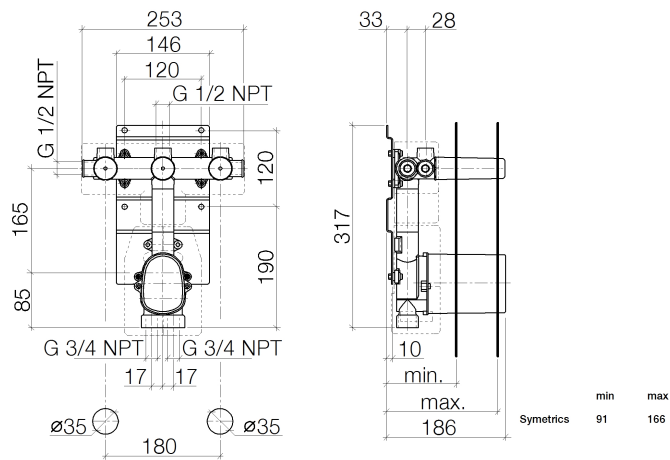
	Extension 1-3/4" -	12 178 970 90
		



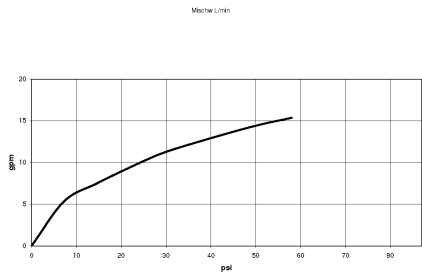
xTOOL Concealed thermostat rough with three volume controls -

SERIES-VARIOUS

35 549 970    Product version up to 5/12/2021



Flow rate chart



Codes & Standards

ASME A112.18.1      cUPC



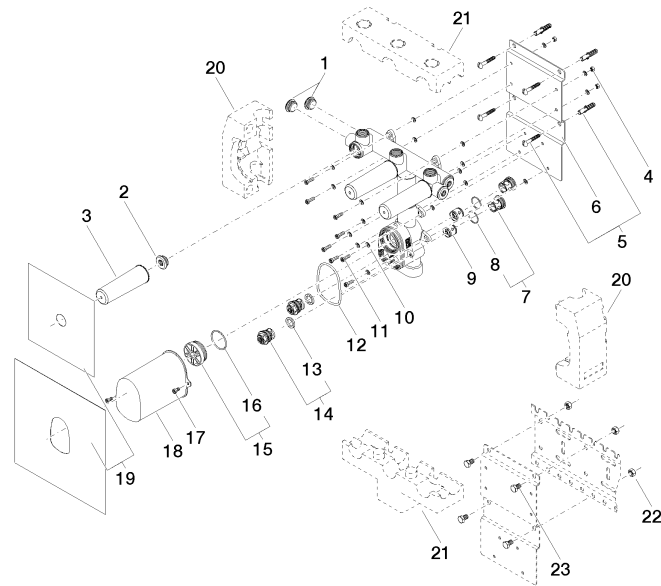
## xTOOL Concealed thermostat rough with three volume controls -

SERIES-VARIOUS

35 549 970 Product version up to 5/12/2021

Certificates and sustainability

IAPMO\_4976 (



## Spare parts list

Number	Item Number	Designation	Number of units	Lead time
21	09 11 11 041 90	accessories	2.00	2
4	09 23 10 037 90	nut	8.00	2
13	09 14 05 002 90	seal	2.00	2
5	04 30 31 024 01 90	fixing set	2.00	2
12	09 14 10 189 90	seal	1.00	2
18	09 21 02 103 90	cap	1.00	2
14	90 29 05 031 00 90	insert	2.00	2
15	04 31 20 100 00 90	plug	1.00	2
22	09 23 10 023 90	nut	4.00	2
23	09 30 30 152 90	screw	4.00	2
6	09 17 20 091 90	holder	1.00	2
9	90 23 01 045 00 90	back-flow preventer	2.00	2
11	09 30 30 058 90	screw	8.00	2
20	09 11 11 012 90	accessories	2.00	2
7	04 21 34 077 00 90	nipple	4.00	2
2	04 31 20 006 00 90	plug	3.00	2
1	04 31 20 062 10 90	plug	7.00	2
8	09 14 10 098 90	seal	4.00	2
3	09 21 02 102 90	cap	3.00	2
16	09 14 10 111 90	seal	1.00	2
10	09 30 11 138 90	disc	24.00	2
17	90 30 30 027 00 90	screw	2.00	2
19	04 14 03 073 07 90	gasket kit	1.00	2