

35 610 970



- Rough parts
- Rain panel with 2 different spray modes
- AQUACIRCLE RAIN: Circular rain curtain, flow rate max. gpm (at 3 bar)
- TEMPEST RAIN: Natural rain, flow rate max. 1.3 gpm (at 3 bar)
- Ceiling installation housing 1356 x 1356 x 290 mm
- Opening diameter 49-1/4"
- Ceiling construction with sufficient load-bearing capacity for permanent attachment of the device (Weight: 57.5 kg / 127 lbs. (US)). M8 threaded bolts (min. strength: 2.000 N) are required to mount the ceiling module

**Input LED Power supply**

- 1 x connector, 110-230 V AC power supply
- Frequency: 50 - 60 Hz

**Output LED Power supply**

- 12V DC (CV)

**Output Specification LED Power supply**

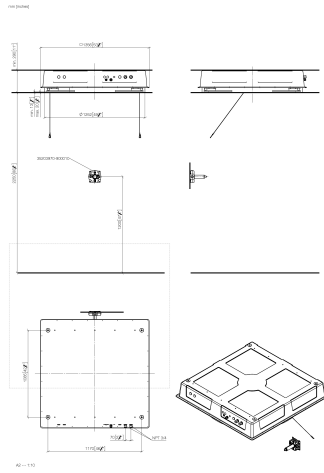
- Class 2
- Light switch not included

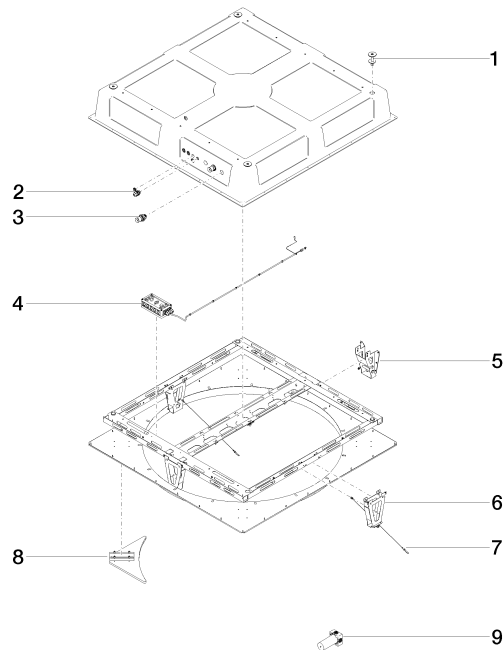
**Environment**

- Not suitable for use in a steam room.
- Not suitable for outdoor use.
- Not suitable for use in chlorinated or salty environments.
- Observe the regulations concerning protected zones specified in DIN VDE 0100, Part 701 (IEC 60364-7-701).

Pre-assembly kit for three-way diverter included

35 610 970





## Spare parts list

Number	Item Number	Designation	Number of units	Lead time
4	90 10 01 192 01 90	electronic accessories	1.00	2
8	90 17 20 215 00 90	end stop	4.00	2
9	35 203 970-90 0010	Wall mounted three-way diverter -	1.00	2
3	90 24 03 286 00 90	connection	2.00	2
1	04 24 03 287 02 90	fixing set	4.00	60
7	90 21 50 007 00 90	accessories	2.00	2
6	90 17 20 209 00 90	holder	1.00	2
2	90 10 01 089 00 90	accessories	1.00	2
5	90 17 20 205 00 90	holder	1.00	2