



Rough for wall-mounted faucet flexible positioning -

SERIES-VARIOUS

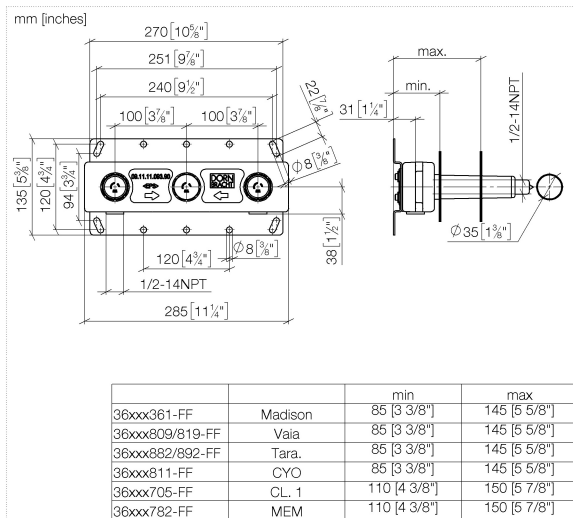
35 720 970 Product version from 4/1/2022



- brass, lead free
- 1/2" connection
- 3x plug 1/2"
- 3x Mud guard

NOTE: Important for certain series! Due to minimum rough-in requirements, a framing of 2x6 studs may be needed.

35 720 970 Product version from 4/1/2022

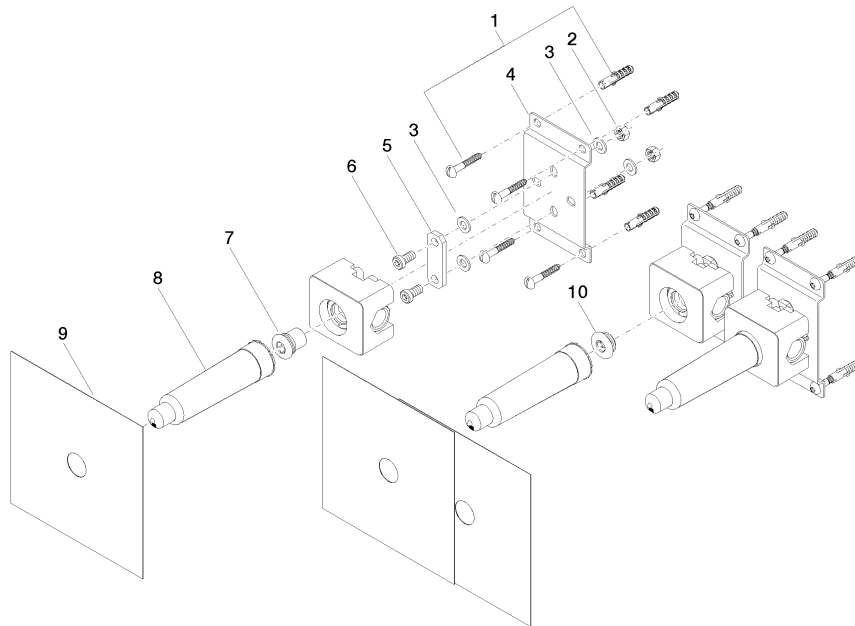


Codes & Standards

ASME A112.18.1 cUPC NSF372 NSF61

Certificates and sustainability

IAPMO_N-4976 IAPMO_6397 IAPMO_4976 (



Spare parts list

Number	Item Number	Designation	Number of units	Lead time
3	09 30 11 139 90	disc	12.00	2
8	04 21 02 173 01 90	cap	3.00	2
4	09 17 20 104 90	holder	3.00	2
10	04 31 20 006 00 90	plug	2.00	2
2	09 23 10 023 90	nut	6.00	2
1	04 30 31 024 01 90	fixing set	6.00	2
7	04 31 20 037 00 90	plug	1.00	2
5	09 30 11 137 90	disc	3.00	60
6	09 30 30 068 90	screw	6.00	2
9	04 14 03 072 01 90	gasket kit	3.00	2