

Rough for wall-mounted faucet -

SERIES-VARIOUS

35 860 970 Product version up to 11/11/2021



- brass, lead free
- 2x Connection 1/2" IT (cold/warm), DN 15
- 1x female thread 1/2" outlet for wall spout
- 1x outlet 1/2"
- 2x Mud guard
- Water protection
- Sound insulation
- Center to center 3-7/8"

Rough can be rotated to position the lever on top or to the left of the spout.

Recommended article



Extension 3/4" -

12 869 970 90

- Not compatible with 36 86X 664-FF0010.
- Not for combination with exposed trim parts 36 86X 664-FF0010

Recommended article



Adapter for reversed water connections -

12 880 970 90

- Not compatible with 36 86X 664-FF0010.

Recommended article



Extension 3/4" -

12 870 970 90

- Only for combination with exposed trim parts 36 86X 664-FF 0010.

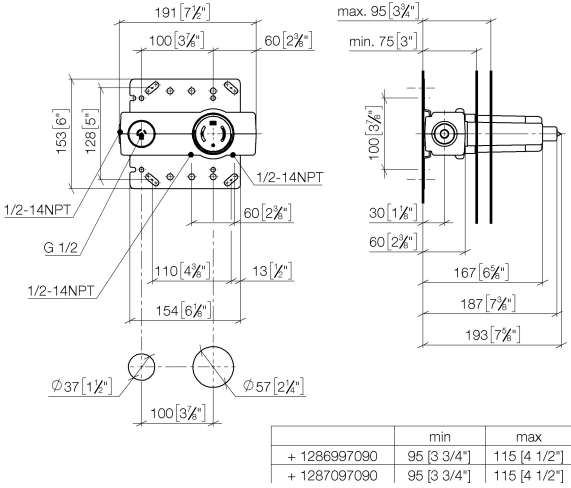
Rough for wall-mounted faucet -

SERIES-VARIOUS

35 860 970

Product version up to 11/11/2021

mm [inches]



Codes & Standards

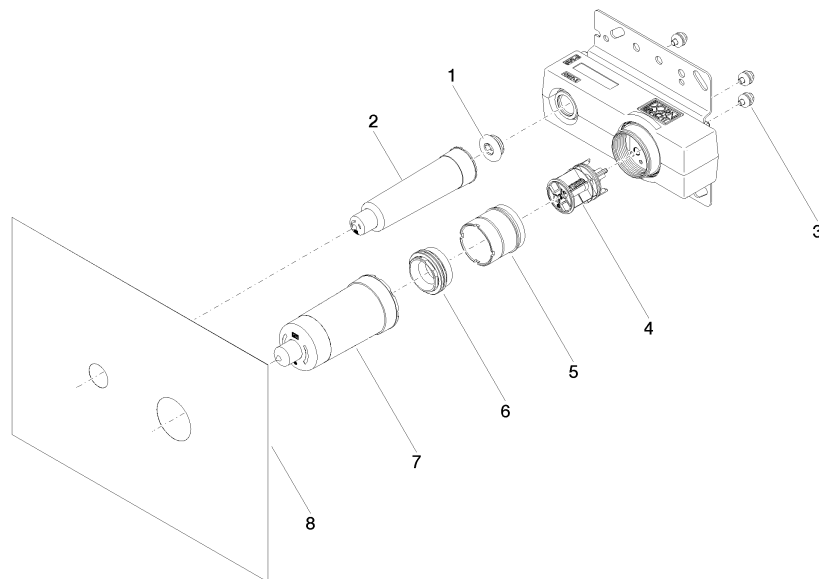
ASME A112.18.1	cUPC	NSF372	NSF61
----------------	------	--------	-------

Certificates and sustainability

IAPMO_N-4976

IAPMO_6397

IAPMO_4976 (



Spare parts list

Number	Item Number	Designation	Number of units	Lead time
4	90 31 20 107 00 90	plug	1.00	2
3	90 23 01 091 00 90	set	3.00	2
6	90 24 04 349 00 90	threaded connector	1.00	2
7	09 21 02 176 90	cap	1.00	60
1	04 31 20 006 00 90	plug	1.00	2
5	90 17 01 238 00 90	sleeve	1.00	2
8	04 14 03 074 01 90	gasket kit	1.00	2
2	09 21 02 173 90	cap	1.00	2