

## Pressure Balance Valve -

---

35 920 970 90 Product version from 5/1/2023



- Integrated supply stops
- brass, lead free
- 2x back flow preventer
- 3x outlet 1/2"
- 2x inlet 1/2"
- Mud guard
- Water protection
- Noise and heat insulation
- suitable for xGRID (when using installation track + 1/2" recess depth)

---

### Recommended article

**Extension 1" -**

12 193 970 90



---

### Recommended article

**Extension 1" -**

12 192 970 90





## Pressure Balance Valve -

---

35 920 970 90 Product version from 5/1/2023

### Codes & Standards

---

ASME A112.18.1      cUPC

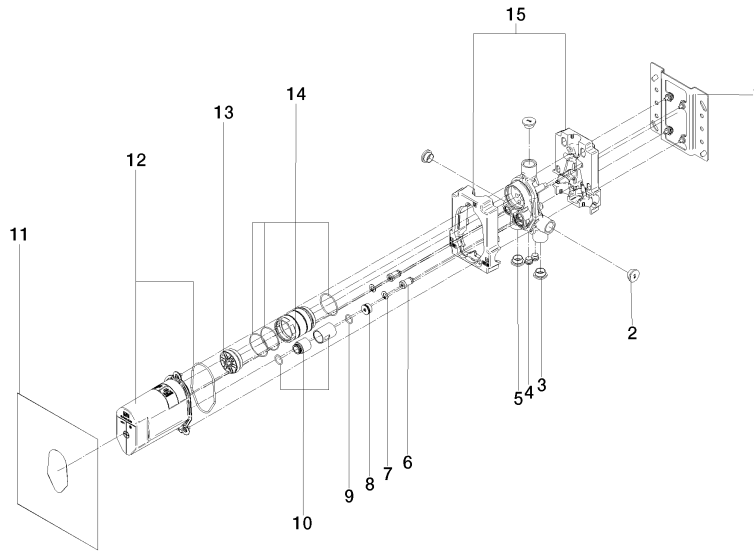
### Certificates

---

IAPMO\_4976 (

**Pressure Balance Valve -**

35 920 970 90 Product version from 5/1/2023



**Spare parts list**

Number	Item Number	Designation	Number of units	Lead time
1	04 17 20 128 00 90	holder	1	2
2	09 31 20 092 90	plug	3	2
3	09 31 20 094 90	plug	1	2
4	04 31 20 039 11 90	plug	2	2
5	09 31 20 093 90	plug	1	2
6	04 24 03 223 00 90	insert	2	2
7	09 16 01 014 90	ring	2	2
8	09 31 20 098 90	plug	1	2
9	90 14 10 055 00 90	seal	1	2
10	90 17 01 189 00 90	sleeve	1	2
11	04 14 03 155 00 90	gasket kit	1	2
12	90 21 02 148 00 90	cap	1	2
13	04 31 20 100 00 90	plug	1	2
14	90 17 01 357 00 90	sleeve	1	2
15	09 11 11 058 90	accessories	1	2