

META Wall mounted two-way diverter - Light gold

META

36 200 661    Product version from 4/1/2022



- Manual diverter
  - Without flange
  - Handle Ø 2-3/8"
  - with integrated shut-off
- (ADA)**
- Does not allow for simultaneous use of functions**
- (ADA)
- Does not allow for simultaneous use of functions

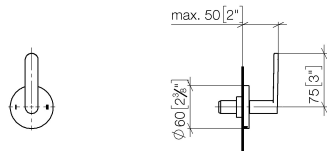
	Light gold	36 200 661-26 0010
	Chrome	36 200 661-00 0010
	Brushed Platinum	36 200 661-06 0010
	Brushed Light Gold	36 200 661-27 0010
	Matte Black	36 200 661-33 0010
	Brushed Bronze	36 200 661-42 0010
	Brushed Champagne (22kt Gold)	36 200 661-46 0010
	Champagne (22kt Gold)	36 200 661-47 0010
	Brushed Chrome	36 200 661-93 0010
	Brushed Dark Platinum	36 200 661-99 0010

Required article



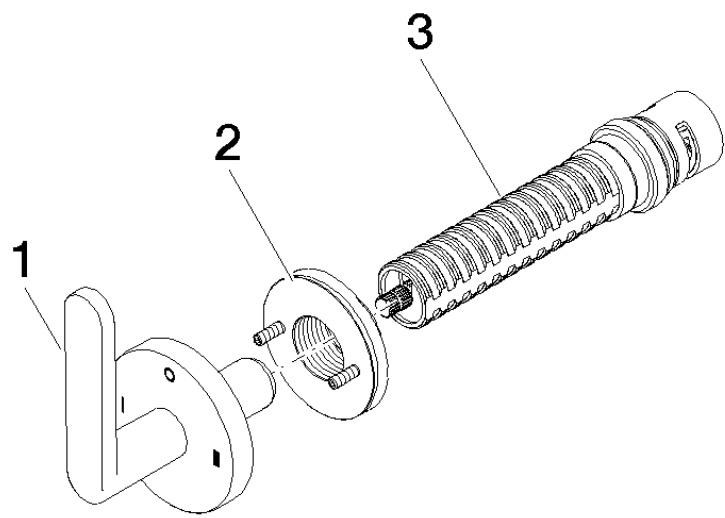
- Wall mounted two-way diverter -**    35 202 970-90
- Min. rough in depth 4-1/2"    0010
  - Max. rough in depth 6-1/4"

mm [inches]



Codes & Standards

ADA	California Energy Commission (CEC)
-----	--



Spare parts list

Number	Item Number	Designation	Number of units	Lead time
2	90 21 02 181 00 90	disc	1.00	2
1	90 20 66 014 01-26	handle	1.00	30
3	90 90 03 306 10 90	diverter	1.00	2