



LULU Wall mounted two-way diverter - Chrome

LULU



36 200 710 Product version from 4/1/2022



- Manual diverter
 - Flange 2-3/8" x 3-1/8"
 - with integrated shut-off (ADA)
- Does not allow for simultaneous use of functions**

(ADA)

Does not allow for simultaneous use of functions

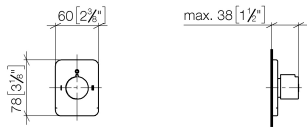
	Chrome	36 200 710-00 0010
	Brushed Platinum	36 200 710-06 0010

Required article



- Wall mounted two-way diverter - 35 202 970-90 0010**
- Max. rough in depth 6-1/8"
 - Min. rough in depth 3-3/8"

mm [inches]

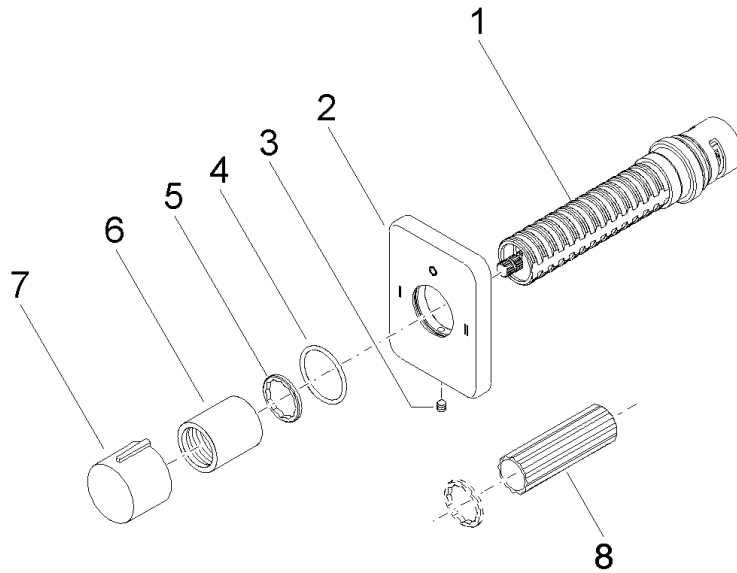


Codes & Standards

ADA	ASME A112.18.1	California Energy Commission (CEC)	cUPC
-----	----------------	--	------

Certificates and sustainability

IAPMO_4976 (



Spare parts list

Number	Item Number	Designation	Number of units	Lead time
5	09 16 01 025 90	ring	1.00	2
1	90 90 03 306 10 90	diverter	1.00	2
6	09 21 02 070-00	cover	1.00	10
7	09 20 97 030-00	handle	1.00	10
2	09 27 71 116-00	rosette	1.00	60
4	90 14 10 063 00 90	seal	1.00	2
3	90 31 11 007 00 90	pin	1.00	2
8	90 30 09 010 00 90	key	1.00	2