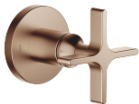






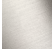



VAIA Wall mounted two-way diverter - Brushed Bronze

VAIA

36 200 809 Product version from 4/1/2022



- Manual diverter
 - Flange diameter 2-3/8"
 - with integrated shut-off (ADA)
- Does not allow for simultaneous use of functions**
- (ADA)
- Does not allow for simultaneous use of functions

	Brushed Bronze	36 200 809-42 0010
	Chrome	36 200 809-00 0010
	Brushed Platinum	36 200 809-06 0010
	Dark Chrome	36 200 809-19 0010
	Brushed Durabrass (23kt Gold)	36 200 809-28 0010
	Brushed Dark Platinum	36 200 809-99 0010

Required article



- Wall mounted two-way diverter -** 35 202 970-90
- Min. rough in depth 3-3/8" 0010
 - Max. rough in depth 6-1/4"

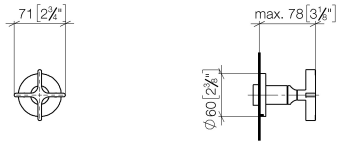


VAIA Wall mounted two-way diverter - Brushed Bronze

VAIA

36 200 809 Product version from 4/1/2022

mm [inches]

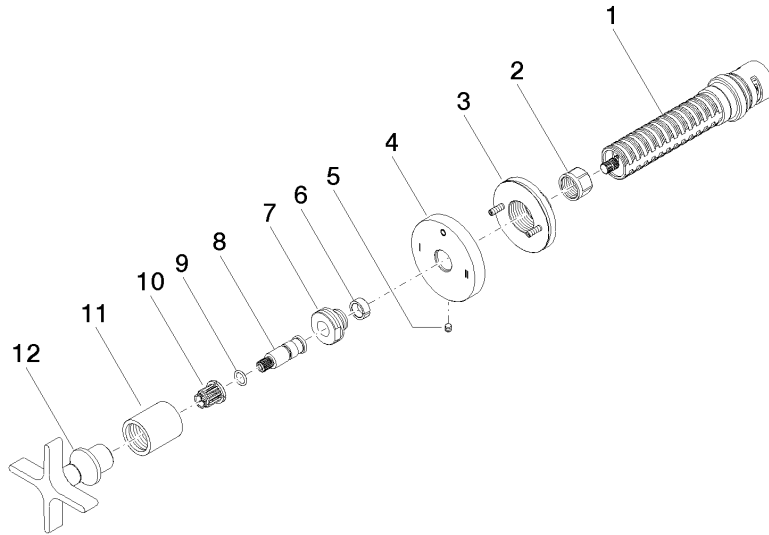


Codes & Standards

ADA	ASME A112.18.1	California Energy Commission (CEC)	cUPC
-----	----------------	------------------------------------	------

Certificates and sustainability

IAPMO_4976 (



Spare parts list

Number	Item Number	Designation	Number of units	Lead time
3	90 21 02 181 00 90	disc	1.00	2
8	09 29 06 022 90	spindle	1.00	2
7	09 24 05 002 90	nipple	1.00	2
12	90 20 80 014 01-42	handle	1.00	30
11	09 21 02 070-42	cover	1.00	60
5	09 31 11 294 90	pin	1.00	2
4	09 27 89 120-42	rosette	1.00	60
2	90 23 30 023 00 90	nut	1.00	2
6	90 14 15 020 03 90	ring	1.00	2
9	90 14 10 060 00 90	seal	1.00	2
10	90 12 12 002 00 90	fixing cap	1.00	2
1	90 90 03 306 10 90	diverter	1.00	2