

VAIA Wall mounted two-way diverter - Brushed Durabronze (23kt Gold)

VAIA

36 200 819 Product version from 4/1/2022



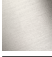


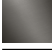


- Manual diverter
 - Flange diameter 2-3/8"
 - with integrated shut-off (ADA)


Does not allow for simultaneous use of functions

(ADA)

Does not allow for simultaneous use of functions

	Brushed Durabronze (23kt Gold)	36 200 819-28 0010
	Chrome	36 200 819-00 0010
	Brushed Platinum	36 200 819-06 0010
	Dark Chrome	36 200 819-19 0010
	Brushed Bronze	36 200 819-42 0010
	Brushed Dark Platinum	36 200 819-99 0010

Required article

	Wall mounted two-way diverter - •Max. rough in depth 6-1/4" •Min. rough in depth 3-3/8"	35 202 970-90 0010
---	--	-----------------------

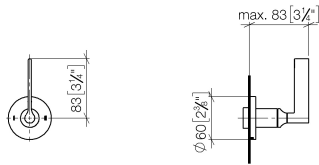


VAIA Wall mounted two-way diverter - Brushed Durabronz (23kt Gold)

VAIA

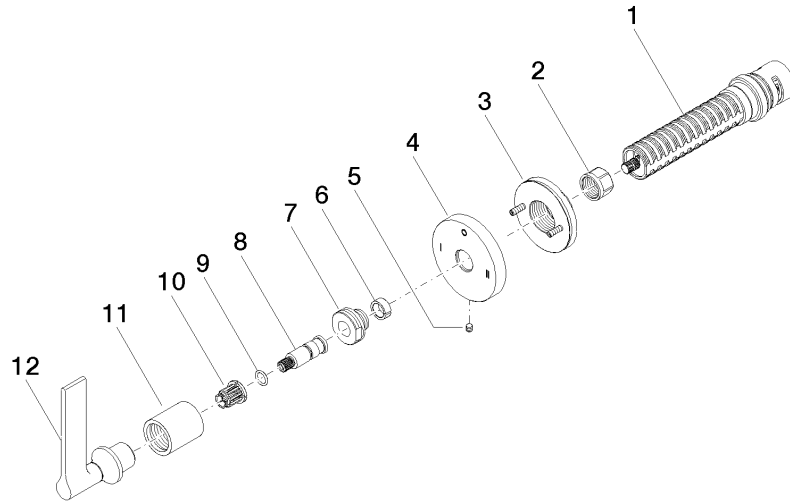
36 200 819 Product version from 4/1/2022

mm [inches]



Codes & Standards

ADA	California Energy Commission (CEC)
-----	--



Spare parts list

Number	Item Number	Designation	Number of units	Lead time
10	90 12 12 002 00 90	fixing cap	1.00	2
4	09 27 89 120-28	rosette	1.00	60
11	09 21 02 070-28	cover	1.00	20
3	90 21 02 181 00 90	disc	1.00	2
1	90 90 03 306 10 90	diverter	1.00	2
8	09 29 06 022 90	spindle	1.00	2
12	90 20 80 015 01-28	handle	1.00	20
5	09 31 11 294 90	pin	1.00	2
7	09 24 05 002 90	nipple	1.00	2
2	90 23 30 023 00 90	nut	1.00	2
9	90 14 10 060 00 90	seal	1.00	2
6	90 14 15 020 03 90	ring	1.00	2