



- Manual diverter
  - Flange 2-3/8" x 2-3/8"
  - with integrated shut-off (ADA)


**Does not allow for simultaneous use of functions**

(ADA)

Does not allow for simultaneous use of functions

	Chrome	36 200 980-00 0010
	Brushed Platinum	36 200 980-06 0010
	Brushed Light Gold	36 200 980-27 0010
	Brushed Durabronze (23kt Gold)	36 200 980-28 0010
	Brushed Champagne (22kt Gold)	36 200 980-46 0010
	Champagne (22kt Gold)	36 200 980-47 0010
	Brushed Chrome	36 200 980-93 0010
	Brushed Dark Platinum	36 200 980-99 0010

Required article

	<div> <div>Wall mounted two-way diverter -</div> <div> <ul style="list-style-type: none"> <li>•Max. rough in depth 6-1/4"</li> <li>•Min. rough in depth 3-3/8"</li> </ul> </div> </div>	35 202 970-90 0010
--	---	--------------------

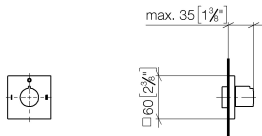


SYMETRICS Wall mounted two-way diverter - Chrome

SYMETRICS

36 200 980 Product version from 4/1/2022

mm [inches]

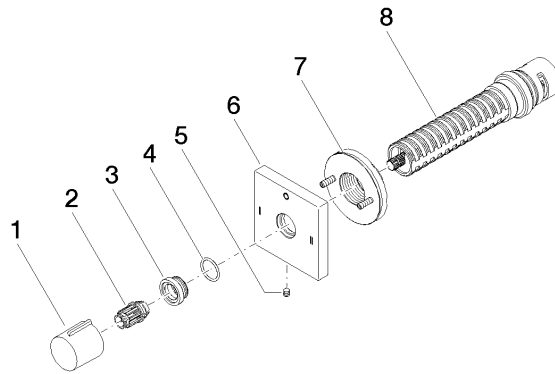


Codes & Standards

ADA	ASME A112.18.1	California Energy Commission (CEC)	cUPC
-----	----------------	------------------------------------	------

Certificates and sustainability

IAPMO\_4976 (



## Spare parts list

Number	Item Number	Designation	Number of units	Lead time
	4 09 14 10 017 90	seal	1.00	2
	8 90 90 03 306 10 90	diverter	1.00	2
	5 09 31 11 294 90	pin	1.00	2
	6 09 27 98 039-00	rosette	1.00	60
	2 09 12 12 005 90	fixing cap	1.00	2
	7 90 21 02 181 00 90	disc	1.00	2
	1 09 20 98 001-00	handle	1.00	10
	3 09 12 12 043-00	base	1.00	10