



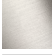



CL.1 Wall mounted two-way diverter - Dark Chrome

CL.1

36 201 705    Product version from 4/1/2022



- WAVE structure
  - Manual diverter
  - Flange 2-3/8" x 2-3/8"
  - with integrated shut-off
- (ADA)
- Does not allow for simultaneous use of functions

	Dark Chrome	36 201 705-19 0010
	Chrome	36 201 705-00 0010
	Brushed Platinum	36 201 705-06 0010
	Brushed Champagne (22kt Gold)	36 201 705-46 0010
	Champagne (22kt Gold)	36 201 705-47 0010
	Brushed Dark Platinum	36 201 705-99 0010

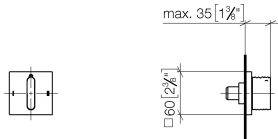


CL.1 Wall mounted two-way diverter - Dark Chrome

CL.1

36 201 705    Product version from 4/1/2022

mm [inches]



Codes & Standards

ADA

ASME A112.18.1

California Energy  
Commission  
(CEC)

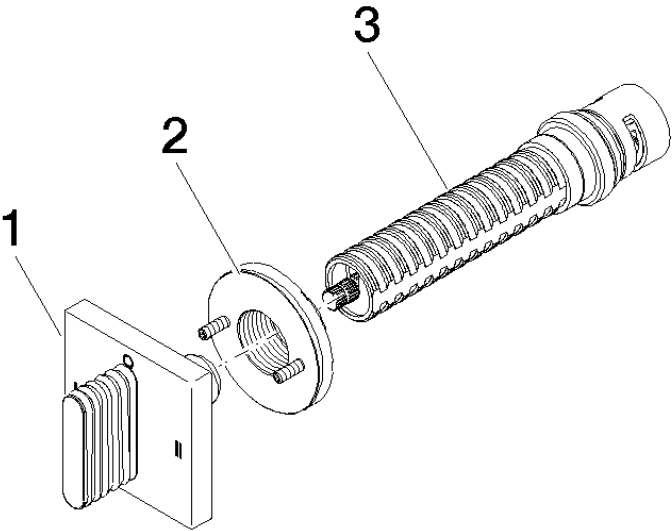
cUPC

Certificates and sustainability

IAPMO\_4976 (

36 201 705    Product version from 4/1/2022

Parts for other  
finishes can be found  
here: [Chrome](#)



Spare parts list

Number	Item Number	Designation	Number of units	Lead time
1	90 20 70 055 09-19	handle	1.00	20
3	90 90 03 306 10 90	diverter	1.00	2
2	90 21 02 181 00 90	disc	1.00	2