



CL.1 Wall mounted two-way diverter - Brushed Dark Platinum

CL.1

36 201 705 Product version from 4/1/2022



- WAVE structure
 - Manual diverter
 - Flange 2-3/8" x 2-3/8"
 - with integrated shut-off (ADA)
- Does not allow for simultaneous use of functions**
- (ADA)
- Does not allow for simultaneous use of functions

	Brushed Dark Platinum	36 201 705-99 0010
	Chrome	36 201 705-00 0010
	Brushed Platinum	36 201 705-06 0010
	Dark Chrome	36 201 705-19 0010
	Brushed Champagne (22kt Gold)	36 201 705-46 0010
	Champagne (22kt Gold)	36 201 705-47 0010

Required article



- Wall mounted two-way diverter -** 35 202 970-90
•Max. rough in depth 6-1/4" 0010
•Min. rough in depth 4-1/2"

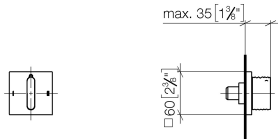


CL.1 Wall mounted two-way diverter - Brushed Dark Platinum

CL.1

36 201 705 Product version from 4/1/2022

mm [inches]



Codes & Standards

ADA

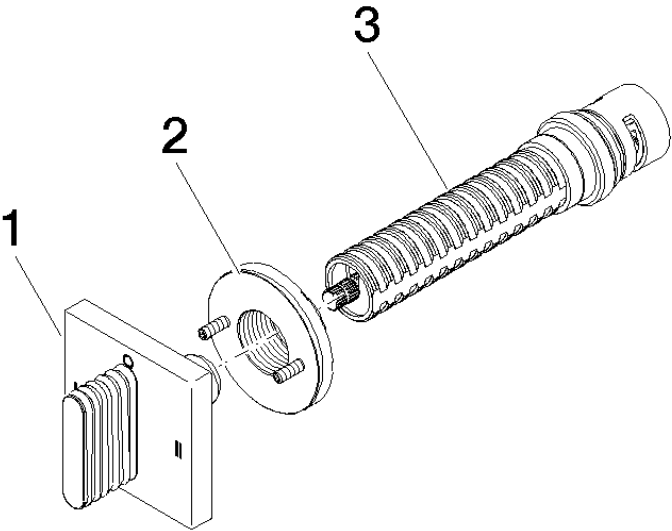
ASME A112.18.1

California Energy
Commission
(CEC)

cUPC

Certificates and sustainability

IAPMO_4976 (



Spare parts list

Number	Item Number	Designation	Number of units	Lead time
3	90 90 03 306 10 90	diverter	1.00	2
1	90 20 70 055 09-99	handle	1.00	20
2	90 21 02 181 00 90	disc	1.00	2