

## TARA Wall mounted three-way diverter - Brushed Dark Platinum

TARA

36 210 892 Product version from 4/1/2022



- Manual diverter
- Flange 2-3/8"
- with integrated shut-off

**(ADA)**

**Does not allow for simultaneous use of functions**

(ADA)

Does not allow for simultaneous use of functions

|   |                                |                    |
|---|--------------------------------|--------------------|
|    | Brushed Dark Platinum          | 36 210 892-99 0010 |
|    | Chrome                         | 36 210 892-00 0010 |
|    | Brushed Platinum               | 36 210 892-06 0010 |
|    | Platinum                       | 36 210 892-08 0010 |
|    | Brushed Durabronze (23kt Gold) | 36 210 892-28 0010 |
|    | Matte Black                    | 36 210 892-33 0010 |
|    | Brushed Dark Brass             | 36 210 892-39 0010 |
|    | Brushed Bronze                 | 36 210 892-42 0010 |
|    | Brushed Champagne (22kt Gold)  | 36 210 892-46 0010 |
|  | Champagne (22kt Gold)          | 36 210 892-47 0010 |
|  | Brushed Chrome                 | 36 210 892-93 0010 |

### Required article



**Wall mounted three-way diverter -** 35 203 970-90 0010

- Max. rough in depth 6-1/4"
- Min. rough in depth 3-3/8"

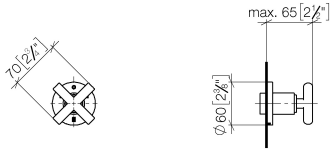


TARA Wall mounted three-way diverter - Brushed Dark Platinum

TARA

36 210 892    Product version from 4/1/2022

mm [inches]

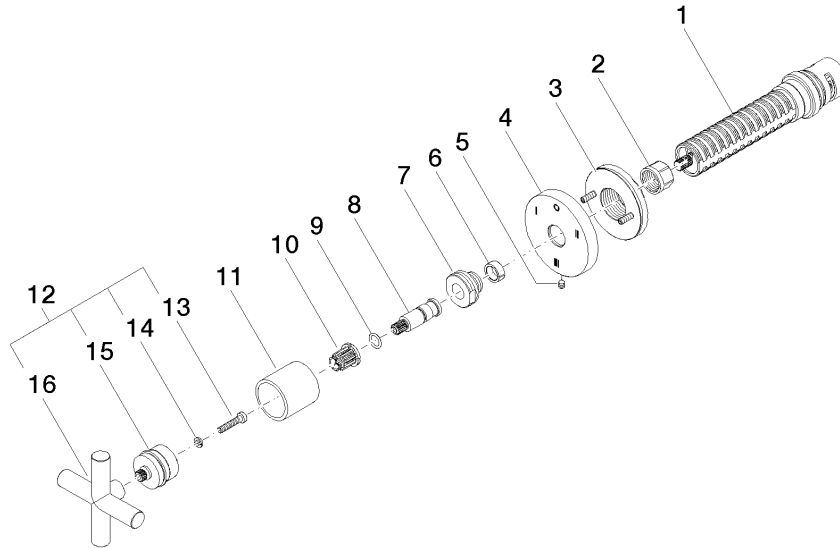


Codes & Standards

|     |                |                                    |      |
|-----|----------------|------------------------------------|------|
| ADA | ASME A112.18.1 | California Energy Commission (CEC) | cUPC |
|-----|----------------|------------------------------------|------|

Certificates and sustainability

IAPMO\_4976 (



## Spare parts list

| Number | Item Number        | Designation | Number of units | Lead time |
|--------|--------------------|-------------|-----------------|-----------|
| 7      | 09 24 05 002 90    | nipple      | 1.00            | 2         |
| 5      | 09 31 11 294 90    | pin         | 1.00            | 2         |
| 3      | 90 21 02 181 00 90 | disc        | 1.00            | 2         |
| 8      | 09 29 06 022 90    | spindle     | 1.00            | 2         |
| 4      | 09 27 89 119-99    | rosette     | 1.00            | 60        |
| 16     | 09 20 89 010-99    | handle      | 1.00            | 60        |
| 15     | 90 12 12 219 00-99 | base        | 1.00            | 20        |
| 11     | 09 21 02 144-99    | sleeve      | 1.00            | 20        |
| 1      | 90 90 03 305 10 90 | diverter    | 1.00            | 2         |
| 10     | 90 12 12 002 00 90 | fixing cap  | 1.00            | 2         |
| 13     | 90 30 30 075 00 90 | screw       | 1.00            | 2         |
| 12     | 90 20 89 010 10-99 | handle      | 1.00            | 20        |
| 6      | 90 14 15 020 03 90 | ring        | 1.00            | 2         |
| 2      | 90 23 30 023 00 90 | nut         | 1.00            | 2         |
| 9      | 90 14 10 060 00 90 | seal        | 1.00            | 2         |
| 14     | 90 30 11 029 00 90 | disc        | 1.00            | 2         |