

SYMETRICS Wall mounted three-way diverter - Brushed Platinum

SYMETRICS

36 210 985 Product version from 4/1/2022



- Manual diverter
- Flange 2-3/8" x 2-3/8"
- with integrated shut-off

(ADA)

Does not allow for simultaneous use of functions

(ADA)

Does not allow for simultaneous use of functions

| | | |
|---|--------------------------------|--------------------|
|  | Brushed Platinum | 36 210 985-06 0010 |
|  | Chrome | 36 210 985-00 0010 |
|  | Brushed Light Gold | 36 210 985-27 0010 |
|  | Brushed Durabronze (23kt Gold) | 36 210 985-28 0010 |
|  | Matte Black | 36 210 985-33 0010 |
|  | Brushed Champagne (22kt Gold) | 36 210 985-46 0010 |
|  | Champagne (22kt Gold) | 36 210 985-47 0010 |
|  | Brushed Chrome | 36 210 985-93 0010 |
|  | Brushed Dark Platinum | 36 210 985-99 0010 |

Required article



- Wall mounted three-way diverter -** 35 203 970-90
 •Max. rough in depth 6-1/4" 0010
 •Min. rough in depth 3-3/8"

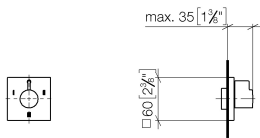


SYMETRICS Wall mounted three-way diverter - Brushed Platinum

SYMETRICS

36 210 985 Product version from 4/1/2022

mm [inches]

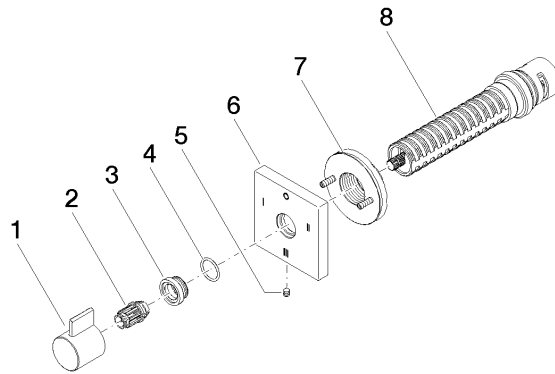


Codes & Standards

| | | | |
|-----|----------------|------------------------------------|------|
| ADA | ASME A112.18.1 | California Energy Commission (CEC) | cUPC |
|-----|----------------|------------------------------------|------|

Certificates and sustainability

IAPMO_4976 (



Spare parts list

| Number | Item Number | Designation | Number of units | Lead time |
|--------|--------------------|-------------|-----------------|-----------|
| 5 | 09 31 11 294 90 | pin | 1.00 | 2 |
| 2 | 09 12 12 005 90 | fixing cap | 1.00 | 2 |
| 3 | 09 12 12 043-06 | base | 1.00 | 10 |
| 7 | 90 21 02 181 00 90 | disc | 1.00 | 2 |
| 8 | 90 90 03 305 10 90 | diverter | 1.00 | 2 |
| 4 | 09 14 10 017 90 | seal | 1.00 | 2 |
| 1 | 09 20 98 002-06 | handle | 1.00 | 10 |
| 6 | 09 27 98 040-06 | rosette | 1.00 | 60 |