

## TARA Volume Control - Brushed Dark Brass

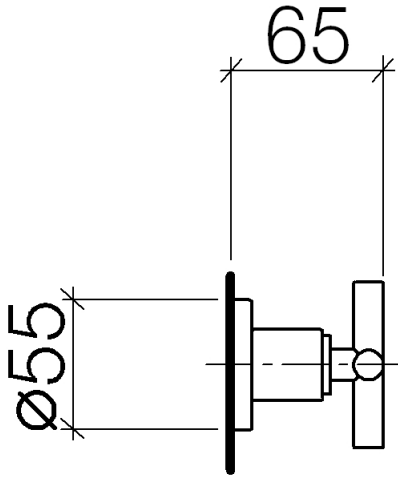
TARA

36 310 892 Product version from 10/14/2020



- Flange diameter 2-1/8"
- (ADA)

	Brushed Dark Brass	36 310 892-39
	Chrome	36 310 892-00
	Brushed Platinum	36 310 892-06
	Platinum	36 310 892-08
	Durabrass (23kt Gold)	36 310 892-09
	Brushed Light Gold	36 310 892-27
	Brushed Durabrass (23kt Gold)	36 310 892-28
	Matte Black	36 310 892-33
	Brushed Bronze	36 310 892-42
	Brushed Champagne (22kt Gold)	36 310 892-46
	Champagne (22kt Gold)	36 310 892-47
	Brushed Chrome	36 310 892-93
	Brushed Dark Platinum	36 310 892-99

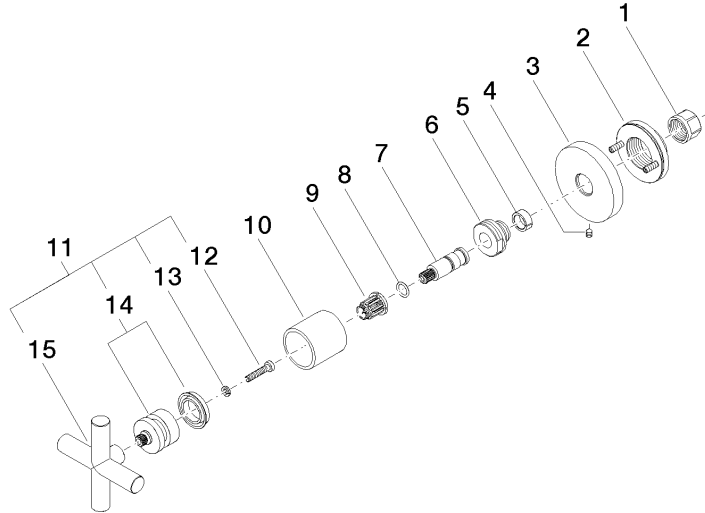


#### Codes & Standards

ADA

36 310 892 Product version from 10/14/2020

Parts for other  
finishes can be found  
here: [Chrome](#)



## Spare parts list

Number	Item Number	Designation	Number of units	Lead time
	12 90 30 30 075 00 90	screw	1.00	2
	14 90 12 12 007 00-39	base	1.00	30
	13 90 30 11 029 00 90	disc	1.00	2
	9 90 12 12 002 00 90	fixing cap	1.00	2
	5 90 14 15 020 03 90	ring	1.00	2
	7 09 29 06 022 90	spindle	1.00	2
	1 90 23 30 023 00 90	nut	1.00	2
	3 09 27 89 108-39	rosette	1.00	60
	10 09 21 02 144-39	sleeve	1.00	60
	6 09 24 05 002 90	nipple	1.00	2
	4 90 31 11 007 00 90	pin	1.00	2
	11 90 20 89 010 10-39	handle	1.00	30
	2 90 21 02 108 00 90	disc	1.00	2
	15 09 20 89 010-39	handle	1.00	60
	8 90 14 10 060 00 90	seal	1.00	2