



SYMETRICS Volume Control with two volume controls with diverter for wall-mounted installation - Chrome

SYMETRICS

36 337 980

- Cover plate 9-1/2" x 2-3/8"

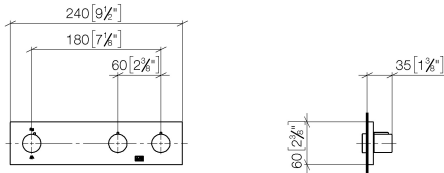




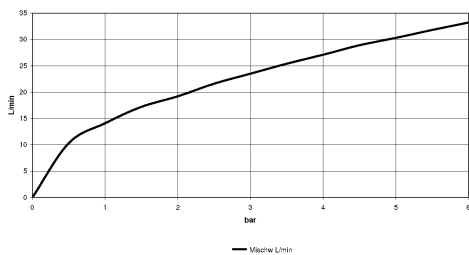
SYMETRICS Volume Control with two volume controls with diverter for wall-mounted installation - Chrome

SYMETRICS

36 337 980
mm [inches]



Flow rate chart



Codes & Standards

California Energy Commission (CEC)	DIN 4109	ISO 3822	Ü-Zeichen
------------------------------------	----------	----------	-----------



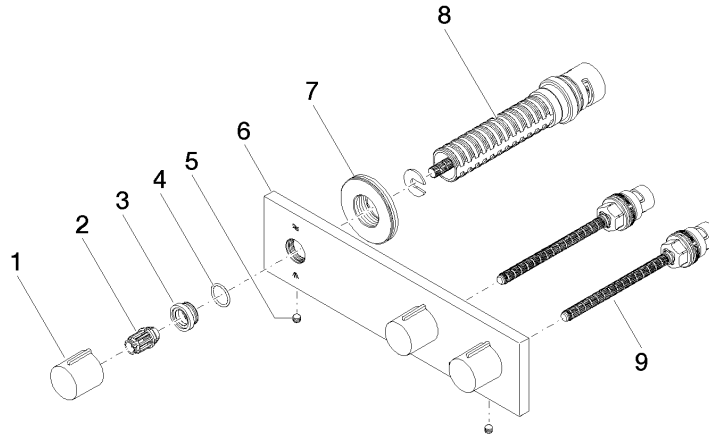
SYMETRICS Volume Control with two volume controls with diverter for wall-mounted installation - Chrome

SYMETRICS

36 337 980

Certificates and sustainability

LGA_18



Spare parts list

Number	Item Number	Designation	Number of units	Lead time
2	09 12 12 005 90	fixing cap	3.00	2
9	90 90 03 202 00 90	top	2.00	2
4	09 14 10 017 90	seal	3.00	2
1	09 20 98 001-00	handle	3.00	10
7	09 30 01 107 90	sleeve	1.00	2
6	09 27 98 023-00	plate	1.00	10
8	90 90 03 159 00 90	diverter	1.00	2
3	09 12 12 043-00	base	3.00	10
5	90 31 11 112 00 90	pin	2.00	2