

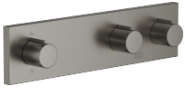


SYMETRICS Volume Control with two volume controls with diverter for wall-mounted installation - Brushed Dark Platinum

SYMETRICS

36 337 980

- Cover plate 9-1/2" x 2-3/8"

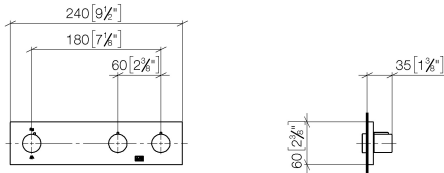




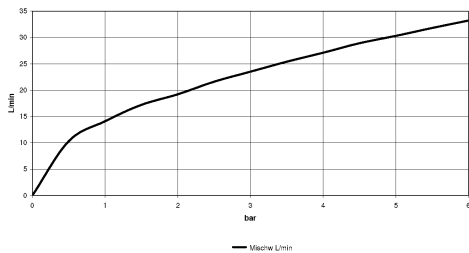
SYMETRICS Volume Control with two volume controls with diverter for wall-mounted installation - Brushed Dark Platinum

SYMETRICS

36 337 980
mm [inches]



Flow rate chart



Codes & Standards

California Energy
Commission
(CEC)

DIN 4109

ISO 3822

Ü-Zeichen



SYMETRICS Volume Control with two volume controls with diverter for wall-mounted installation - Brushed Dark Platinum

SYMETRICS

36 337 980

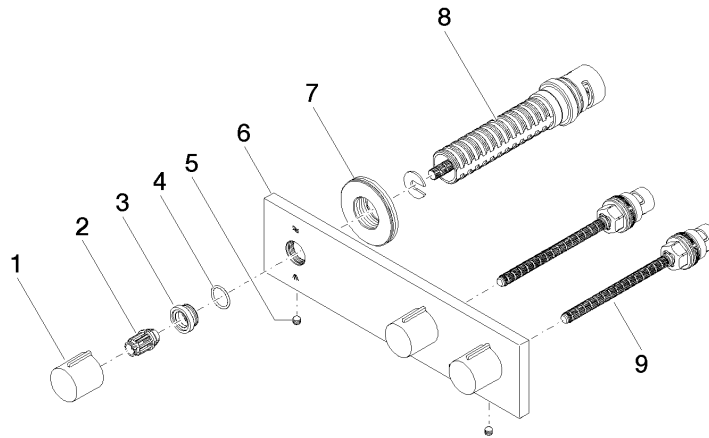
Certificates and sustainability

LGA_18

SYMETRICS Volume Control with two volume controls with diverter for wall-mounted installation - Brushed Dark Platinum

SYMETRICS

36 337 980



Spare parts list

Number	Item Number	Designation	Number of units	Lead time
7	09 30 01 107 90	sleeve	1.00	2
8	90 90 03 159 00 90	diverter	1.00	2
2	09 12 12 005 90	fixing cap	3.00	2
1	09 20 98 001-99	handle	3.00	20
6	09 27 98 023-99	plate	1.00	20
3	09 12 12 043-99	base	3.00	20
4	09 14 10 017 90	seal	3.00	2
9	90 90 03 202 00 90	top	2.00	2
5	90 31 11 112 00 90	pin	2.00	2