

## xTOOL Concealed thermostat without diverter - Matte Black

SERIES SPECIFIC

36 416 780 Product version up to 2/2/2021



- Cover plate 4-3/4" x 4-3/4"
- Temperature control handle with safety lock at 100 °F/ 38°C

**NOTE: Important! Due to minimum rough-in requirements, a framing of 2 x 6 studs may be needed.**

NOTE: Important! Due to minimum rough-in requirements, a framing of 2 x 6 studs may be needed.

	Matte Black	36 416 780-33
	Chrome	36 416 780-00
	Brushed Platinum	36 416 780-06
	Platinum	36 416 780-08
	Dark Chrome	36 416 780-19
	Brushed Durabrass (23kt Gold)	36 416 780-28
	Brushed Champagne (22kt Gold)	36 416 780-46
	Champagne (22kt Gold)	36 416 780-47
	Cyprus	36 416 780-49
	Brushed Chrome	36 416 780-93
	Brushed Dark Platinum	36 416 780-99

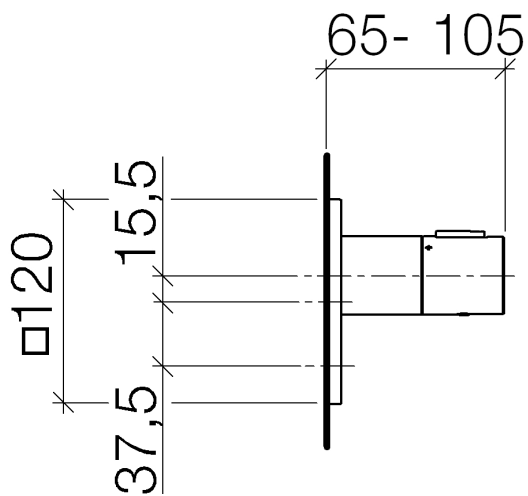
### Required article



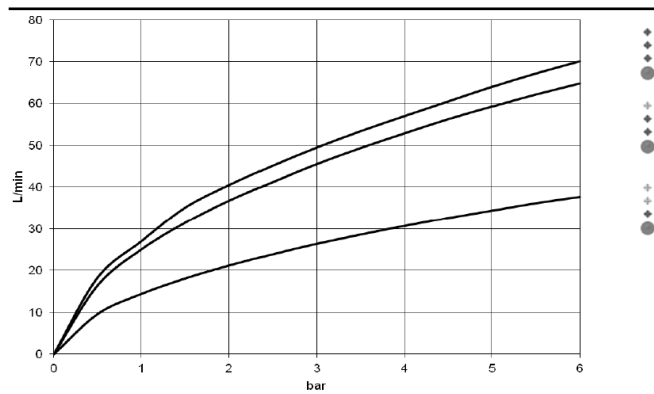
#### xTOOL Concealed thermostat rough -

35 517 970-90  
0010

- Min. rough in depth 3-1/8"
- Max. rough in depth 6-1/8"



Flow rate chart



## Codes & Standards

ASME A112.18.1

cUPC



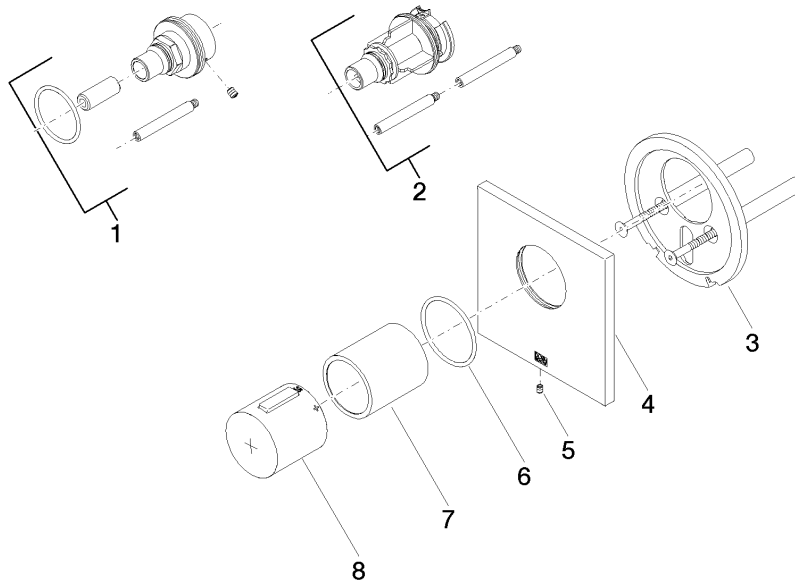
## xTOOL Concealed thermostat without diverter - Matte Black

SERIES SPECIFIC

36 416 780 Product version up to 2/2/2021

Certificates and sustainability

IAPMO\_4976 (



## Spare parts list

Number	Item Number	Designation	Number of units	Lead time
1	12 177 970 90	Extension 1-1/8" -	1.00	2
8	90 17 33 017 00-33	handle	1.00	30
3	90 11 01 196 00 90	base	1.00	2
2	12 178 970 90	Extension 1-3/4" -	1.00	2
5	09 31 11 044 90	pin	1.00	2
6	90 14 10 049 00 90	seal	1.00	2
7	90 21 02 112 00-33	sleeve	1.00	30
4	90 11 02 533 00-33	cover	1.00	30