

36 416 809 Product version from 4/1/2025



- Cover plate Ø 4-7/8"
- Temperature control handle with safety lock at 100 °F/ 38°C  
**(ADA)**
- (ADA)

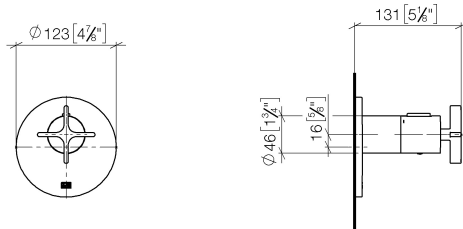
	Chrome	36 416 809-00
	Brushed Platinum	36 416 809-06
	Platinum	36 416 809-08
	Dark Chrome	36 416 809-19
	Brushed Durabronze (23kt Gold)	36 416 809-28
	Brushed Dark Brass	36 416 809-39
	Brushed Bronze	36 416 809-42
	Brushed Champagne (22kt Gold)	36 416 809-46
	Champagne (22kt Gold)	36 416 809-47
	Brushed Dark Platinum	36 416 809-99

Required article



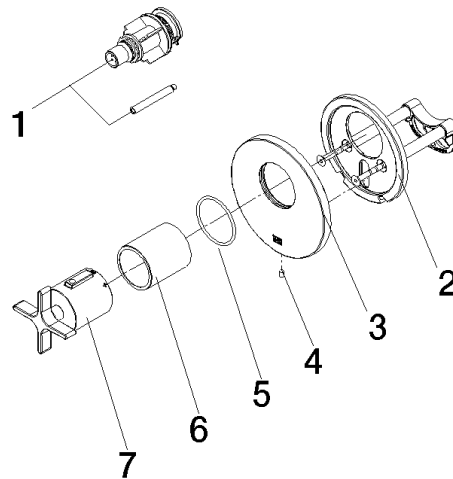
- xTOOL Concealed thermostat  
rough -** 35 517 970-90  
0010
- Max. rough in depth 6-1/8"
  - Min. rough in depth 3-1/8"

mm [inches]



## Codes & Standards

ADA



## Spare parts list

Number	Item Number	Designation	Number of units	Lead time
2	90 11 01 196 00 90	base	1.00	2
4	09 31 11 048 90	pin	1.00	2
7	90 17 33 029 00-00	handle	1.00	10
3	09 11 02 537-00	cover	1.00	10
1	12 178 970 90	Extension 1-3/4" -	1.00	2
6	90 21 02 112 00-00	sleeve	1.00	10
5	90 14 10 049 00 90	seal	1.00	2