

MADISON xTOOL Concealed thermostat without diverter - Platinum








MADISON

36 416 977


Product version up to 2/2/2021

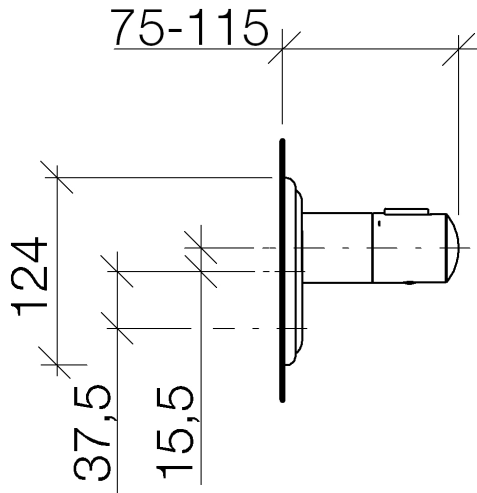


- Cover plate Ø 4-7/8"
- Temperature control handle with safety lock at 100 °F/ 38°C

| | | |
|---|-------------------------------|---------------|
|  | Platinum | 36 416 977-08 |
|  | Chrome | 36 416 977-00 |
|  | Brushed Platinum | 36 416 977-06 |
|  | Durabrand (23kt Gold) | 36 416 977-09 |
|  | Brushed Durabrand (23kt Gold) | 36 416 977-28 |
|  | Brushed Dark Brass | 36 416 977-39 |
|  | Brushed Dark Platinum | 36 416 977-99 |

Required article

| | | |
|---|---|--------------------|
|  | xTOOL Concealed thermostat rough - •Min. rough in depth 3-1/8" •Max. rough in depth 4-3/8" | 35 517 970-90 0010 |
|---|---|--------------------|

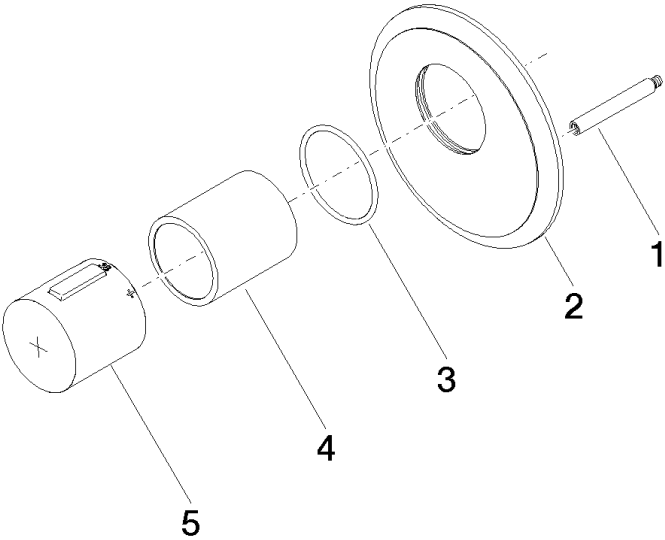


Codes & Standards

ASME A112.18.1 cUPC

Certificates and sustainability

IAPMO_4976 (



Spare parts list

| Number | Item Number | Designation | Number of units | Lead time |
|--------|--------------------|-------------|-----------------|-----------|
| 2 | 09 11 02 163-08 | cover | 1.00 | 60 |
| 5 | 90 17 33 017 00-08 | handle | 1.00 | 40 |
| 3 | 90 14 10 049 00 90 | seal | 1.00 | 2 |
| 1 | 90 31 09 095 00 90 | bar | 1.00 | 2 |
| 4 | 90 21 02 112 00-08 | sleeve | 1.00 | 40 |