

xTOOL Concealed thermostat without diverter - Champagne (22kt Gold)

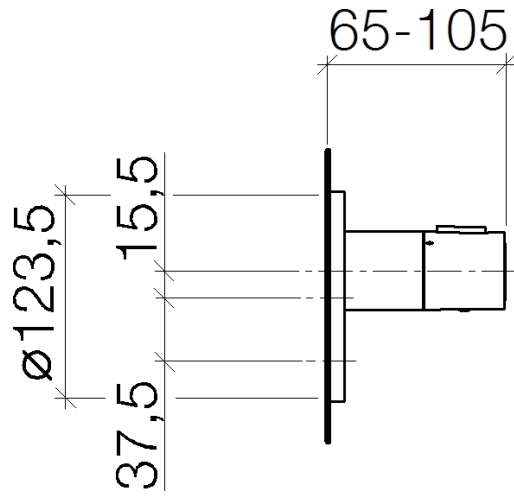
SERIES-VARIOUS

36 416 979 Product version from 1/1/2022

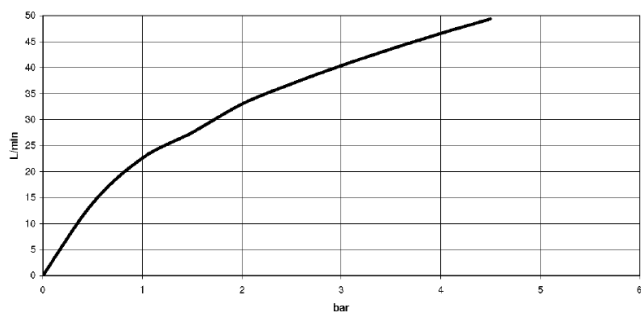


- Cover plate Ø 4-7/8"
- Temperature control handle with safety lock at 100 °F/ 38°C

| | | |
|---|-------------------------------|---------------|
|  | Champagne (22kt Gold) | 36 416 979-47 |
|  | Chrome | 36 416 979-00 |
|  | Brushed Platinum | 36 416 979-06 |
|  | Platinum | 36 416 979-08 |
|  | Durabrass (23kt Gold) | 36 416 979-09 |
|  | Dark Chrome | 36 416 979-19 |
|  | Light gold | 36 416 979-26 |
|  | Brushed Light Gold | 36 416 979-27 |
|  | Brushed Durabrass (23kt Gold) | 36 416 979-28 |
|  | Matte Black | 36 416 979-33 |
|  | Brushed Dark Brass | 36 416 979-39 |
|  | Brushed Bronze | 36 416 979-42 |
|  | Brushed Champagne (22kt Gold) | 36 416 979-46 |
|  | Cyprus | 36 416 979-49 |
|  | Brushed Chrome | 36 416 979-93 |
|  | Brushed Dark Platinum | 36 416 979-99 |

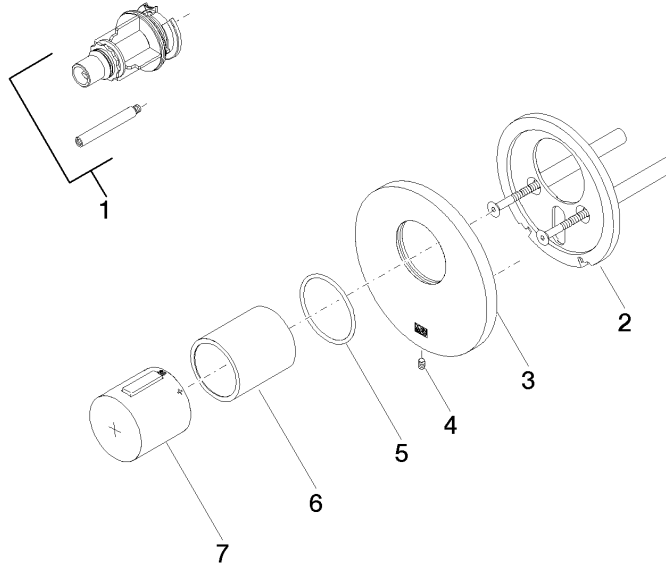


Flow rate chart



36 416 979 Product version from 1/1/2022

Parts for other
finishes can be found
here: [Chrome](#)



Spare parts list

| Number | Item Number | Designation | Number of units | Lead time |
|--------|--------------------|--------------------|-----------------|-----------|
| 1 | 12 178 970 90 | Extension 1-3/4" - | 1.00 | 2 |
| 7 | 90 17 33 017 00-47 | handle | 1.00 | 30 |
| 3 | 09 11 02 537-47 | cover | 1.00 | 30 |
| 2 | 90 11 01 196 00 90 | base | 1.00 | 2 |
| 4 | 09 31 11 048 90 | pin | 1.00 | 2 |
| 5 | 90 14 10 049 00 90 | seal | 1.00 | 2 |
| 6 | 90 21 02 112 00-47 | sleeve | 1.00 | 30 |