

36 416 985 Product version up to 2/2/2021



- Cover plate 4-3/4" x 4-3/4"
- Temperature control handle with safety lock at 100 °F/ 38°C
(ADA)

NOTE: Important! Due to minimum rough-in requirements, a framing of 2 x 6 studs may be needed.

(ADA)

NOTE: Important! Due to minimum rough-in requirements, a framing of 2 x 6 studs may be needed.

	Brushed Platinum	36 416 985-06
	Chrome	36 416 985-00
	Platinum	36 416 985-08
	Dark Chrome	36 416 985-19
	Brushed Durabronze (23kt Gold)	36 416 985-28
	Matte Black	36 416 985-33
	Brushed Champagne (22kt Gold)	36 416 985-46
	Champagne (22kt Gold)	36 416 985-47
	Brushed Dark Platinum	36 416 985-99

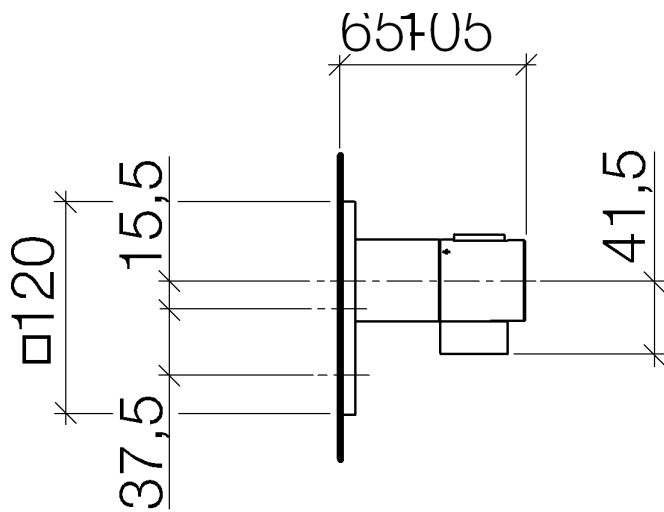
Required article



xTOOL Concealed thermostat rough -

- Min. rough in depth 3-1/8"
- Max. rough in depth 6-1/8"

35 517 970-90
0010



Codes & Standards

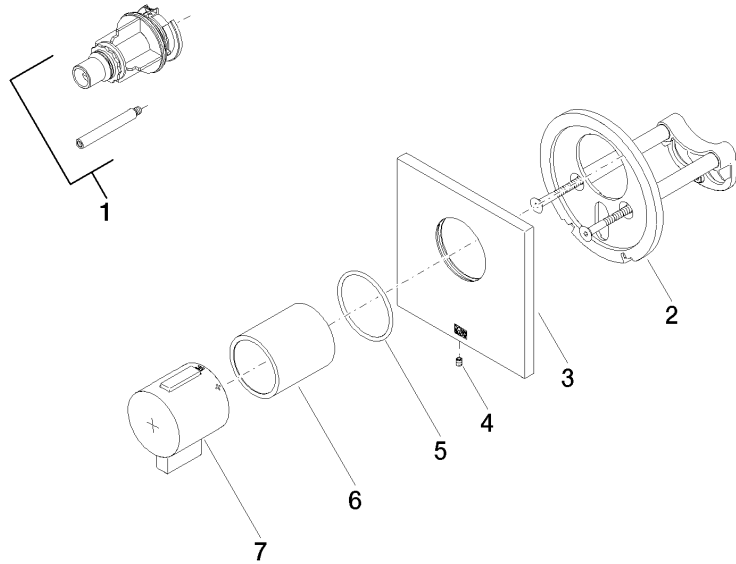
ADA

ASME A112.18.1

cUPC

Certificates and sustainability

IAPMO_4976 (



Spare parts list

Number	Item Number	Designation	Number of units	Lead time
1	12 178 970 90	Extension 1-3/4" -	1.00	2
7	90 17 33 019 00-06	handle	1.00	10
4	09 31 11 044 90	pin	1.00	2
2	90 11 01 196 00 90	base	1.00	2
5	90 14 10 049 00 90	seal	1.00	2
3	90 11 02 533 00-06	cover	1.00	10
6	90 21 02 112 00-06	sleeve	1.00	10