

SYMETRICS xTOOL Concealed thermostat without diverter - Champagne (22kt Gold)

SYMETRICS

36 416 985
Product version up to 2/2/2021







- Cover plate 4-3/4" x 4-3/4"
  - Temperature control handle with safety lock at 100 °F/ 38°C

**(ADA)**

**NOTE: Important! Due to minimum rough-in requirements, a framing of 2 x 6 studs may be needed.**

**(ADA)**

NOTE: Important! Due to minimum rough-in requirements, a framing of 2 x 6 studs may be needed.

	Champagne (22kt Gold)	36 416 985-47
	Chrome	36 416 985-00
	Brushed Platinum	36 416 985-06
	Platinum	36 416 985-08
	Dark Chrome	36 416 985-19
	Brushed Durabrass (23kt Gold)	36 416 985-28
	Matte Black	36 416 985-33
	Brushed Champagne (22kt Gold)	36 416 985-46
	Brushed Dark Platinum	36 416 985-99

Required article



- xTOOL Concealed thermostat rough -**

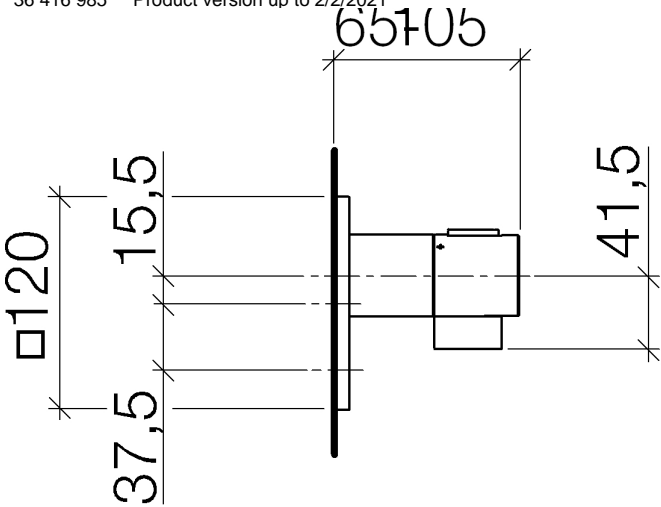
35 517 970-90  
0010
- Max. rough in depth 6-1/8"
  - Min. rough in depth 3-1/8"



SYMETRICS xTOOL Concealed thermostat without diverter - Champagne (22kt Gold)

SYMETRICS

36 416 985 Product version up to 2/2/2021

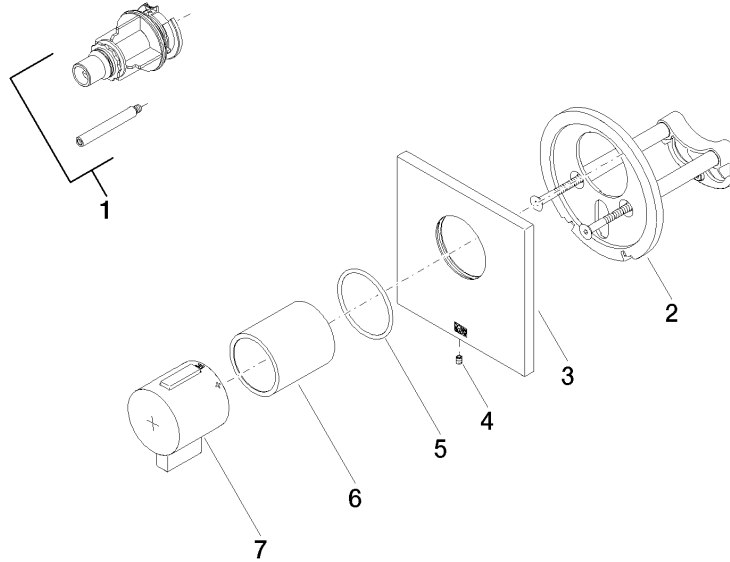


Codes & Standards

ADA ASME A112.18.1 cUPC

Certificates and sustainability

IAPMO\_4976 (



## Spare parts list

Number	Item Number	Designation	Number of units	Lead time
1	12 178 970 90	Extension 1-3/4" -	1.00	2
4	09 31 11 044 90	pin	1.00	2
2	90 11 01 196 00 90	base	1.00	2
7	90 17 33 019 00-47	handle	1.00	30
3	90 11 02 533 00-47	cover	1.00	30
5	90 14 10 049 00 90	seal	1.00	2
6	90 21 02 112 00-47	sleeve	1.00	30