



Concealed thermostat with one-way diverter - Matte Black

SERIES SPECIFIC


36 425 670    Product version up to 5/15/2020




- Cover plate 5-7/8" x 3-1/2"
  - Temperature control handle with safety lock at 100 °F/ 38°C
  - Max. temperature can be set on the trim
- (ADA)**
- (ADA)

|   |                                |                    |
|---|--------------------------------|--------------------|
|    | Matte Black                    | 36 425 670-33 0010 |
|    | Chrome                         | 36 425 670-00 0010 |
|    | Brushed Platinum               | 36 425 670-06 0010 |
|    | Platinum                       | 36 425 670-08 0010 |
|    | Dark Chrome                    | 36 425 670-19 0010 |
|    | Brushed Light Gold             | 36 425 670-27 0010 |
|    | Brushed Durabronze (23kt Gold) | 36 425 670-28 0010 |
|    | Brushed Champagne (22kt Gold)  | 36 425 670-46 0010 |
|    | Champagne (22kt Gold)          | 36 425 670-47 0010 |
|   | Brushed Chrome                 | 36 425 670-93 0010 |
|  | Brushed Dark Platinum          | 36 425 670-99 0010 |


Required article

|   |  |                    |
|---|--|--------------------|
|  | <b>Concealed thermostat for one- and two-way outlets -</b> <ul style="list-style-type: none"><li>•Max. rough in depth 5-3/8"</li><li>•Min. rough in depth 3-1/8"</li></ul> | 35 426 970-90 0010 |
|---|--|--------------------|

Required article

|   |  |               |
|---|--|---------------|
|  | <b>xGRID Installation track 21.85" -</b> | 12 360 970 90 |
|---|--|---------------|

Recommended article

|   |  |               |
|---|--|---------------|
|  | <b>xGRID Mounting bracket for drywall construction -</b> | 12 340 970 90 |
|---|--|---------------|

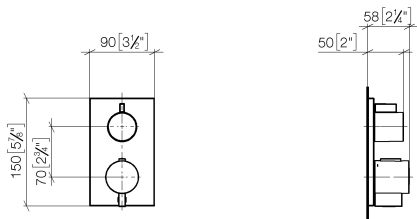


Concealed thermostat with one-way diverter - Matte Black

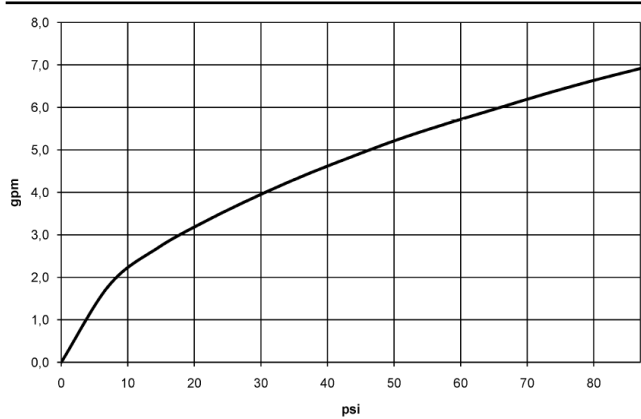
SERIES SPECIFIC

36 425 670    Product version up to 5/15/2020

mm [inches]



Flow rate chart



Codes & Standards

ADA                                      ASME A112.18.1                                      cUPC



## Concealed thermostat with one-way diverter - Matte Black

SERIES SPECIFIC

36 425 670 Product version up to 5/15/2020

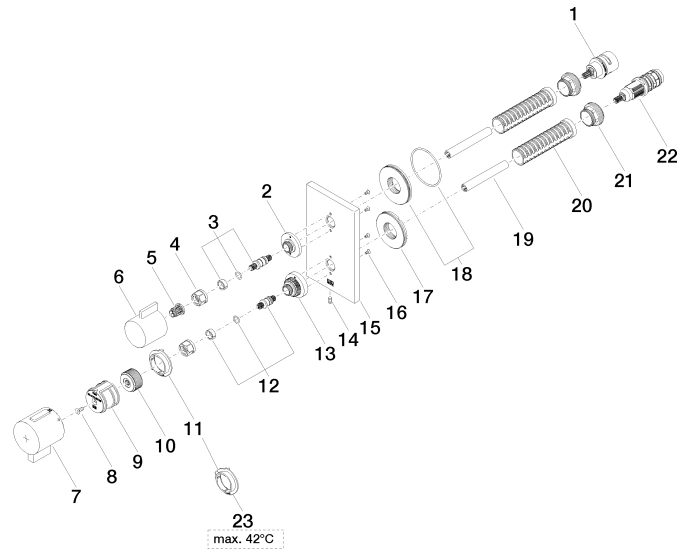
Certificates and sustainability

IAPMO\_4976 (

## Concealed thermostat with one-way diverter - Matte Black

SERIES SPECIFIC

36 425 670 Product version up to 5/15/2020





## Concealed thermostat with one-way diverter - Matte Black

SERIES SPECIFIC

36 425 670 Product version up to 5/15/2020

### Spare parts list

| Number | Item Number        | Designation | Number of units | Lead time |
|--------|--------------------|-------------|-----------------|-----------|
| 22     | 90 15 02 013 00 90 | cartridge   | 1.00            | 2         |
| 7      | 90 17 33 019 00-33 | handle      | 1.00            | 30        |
| 15     | 09 11 02 234-33    | plate       | 1.00            | 30        |
| 5      | 90 12 12 002 00 90 | fixing cap  | 1.00            | 2         |
| 1      | 90 90 03 166 00 90 | top         | 1.00            | 2         |
| 6      | 09 20 67 006-33    | handle      | 1.00            | 30        |
| 11     | 09 28 10 190 90    | regulator   | 1.00            | 2         |
| 18     | 90 30 01 190 00 90 | disc        | 1.00            | 2         |
| 21     | 09 24 04 257 90    | nut         | 1.00            | 2         |
| 23     | 09 28 10 189 90    | regulator   | 1.00            | 2         |
| 2      | 09 12 12 053-33    | base        | 1.00            | 30        |
| 16     | 09 30 30 157 90    | screw       | 4.00            | 2         |
| 17     | 09 30 01 296 90    | disc        | 1.00            | 2         |
| 10     | 09 12 12 054 90    | base        | 1.00            | 2         |
| 14     | 09 31 11 134 90    | pin         | 1.00            | 2         |
| 13     | 09 12 12 051-33    | base        | 1.00            | 30        |
| 3      | 04 29 06 111 01-00 | spindle     | 1.00            | 10        |
| 4      | 90 23 30 023 00 90 | nut         | 2.00            | 2         |
| 8      | 90 30 30 124 00 90 | screw       | 1.00            | 2         |
| 12     | 04 29 06 024 01-00 | spindle     | 1.00            | 10        |
| 9      | 90 12 12 052 00 90 | base        | 1.00            | 2         |
| 20     | 90 18 40 077 01 90 | spindle     | 1.00            | 2         |
| 19     | 90 23 01 124 00 90 | sleeve      | 1.00            | 2         |