

Concealed thermostat with one-way diverter - Chrome

36 425 970 Product version from 6/30/2022




- Cover plate Ø 5-7/8"
- Temperature control handle with safety lock at 100 °F/ 38°C
- Max. temperature can be set on the trim
(ADA)


(ADA)

	Chrome	36 425 970-00 0010
	Brushed Platinum	36 425 970-06 0010
	Platinum	36 425 970-08 0010
	Dark Chrome	36 425 970-19 0010
	Light gold	36 425 970-26 0010
	Brushed Light Gold	36 425 970-27 0010
	Brushed Durabronze (23kt Gold)	36 425 970-28 0010
	Matte Black	36 425 970-33 0010
	Brushed Bronze	36 425 970-42 0010
	Brushed Champagne (22kt Gold)	36 425 970-46 0010
	Champagne (22kt Gold)	36 425 970-47 0010
	Brushed Chrome	36 425 970-93 0010
	Brushed Dark Platinum	36 425 970-99 0010


Required article

	Concealed thermostat for one- and two-way outlets - •Max. rough in depth " •Min. rough in depth "	35 426 970-90 0010
---	--	-----------------------

Required article

	xGRID Installation track 21.85" -	12 360 970 90
---	--	---------------

Recommended article

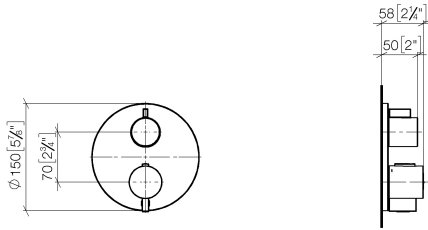
	xGRID Mounting bracket for drywall construction -	12 340 970 90
---	--	---------------



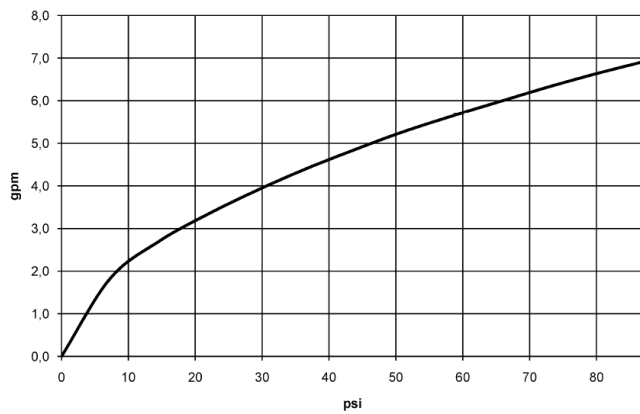
Concealed thermostat with one-way diverter - Chrome

36 425 970 Product version from 6/30/2022

mm [inches]



Flow rate chart



Codes & Standards

ADA

ASME A112.18.1

ASME
A112.18.1/CSA
B125.1

cUPC



Concealed thermostat with one-way diverter - Chrome

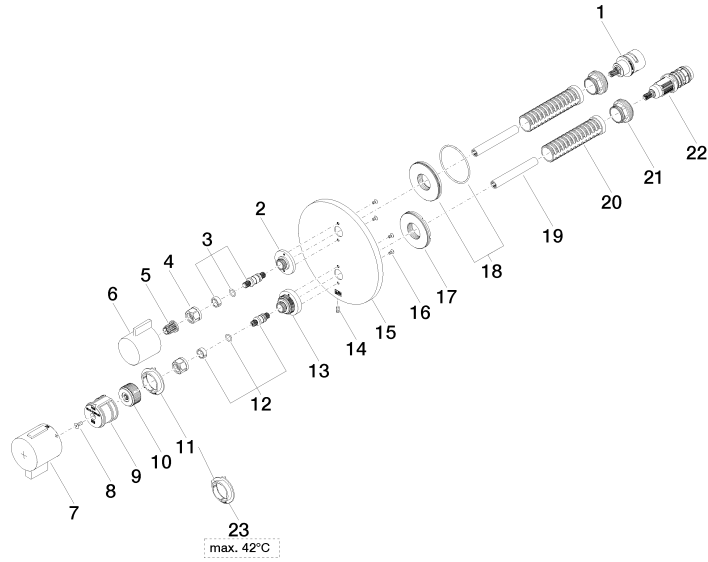
36 425 970 Product version from 6/30/2022

Certificates

IAPMO_4976 (

Concealed thermostat with one-way diverter - Chrome

36 425 970 Product version from 6/30/2022





Concealed thermostat with one-way diverter - Chrome

36 425 970 Product version from 6/30/2022

Spare parts list

Number	Item Number	Designation	Number of units	Lead time
1	90 90 03 166 00 90	top	1	2
2	09 12 12 053-00	base	1	10
3	04 29 06 111 01-00	spindle	1	10
4	90 23 30 023 00 90	nut	2	2
5	90 12 12 002 00 90	fixing cap	1	2
6	09 20 67 006-00	handle	1	10
7	90 17 33 019 00-00	handle	1	10
8	90 30 30 124 00 90	screw	1	2
9	90 12 12 052 00 90	base	1	2
10	09 12 12 054 90	base	1	2
11	09 28 10 190 90	regulator	1	2
12	04 29 06 024 01-00	spindle	1	10
13	09 12 12 051-00	base	1	10
14	09 31 11 134 90	pin	1	2
15	09 11 02 242-00	plate	1	10
16	09 30 30 157 90	screw	4	2
17	09 30 01 296 90	disc	1	2
18	90 30 01 190 00 90	disc	1	2
19	90 23 01 124 00 90	sleeve	2	2
20	90 18 40 077 01 90	spindle	2	2
21	09 24 04 257 90	nut	2	2
22	90 15 02 013 00 90	cartridge	1	2
23	09 28 10 189 90	regulator	1	2