

## Concealed thermostat with one-way diverter - Matte Black

SERIES SPECIFIC

36 425 970 Product version up to 8/24/2020



- Cover plate Ø 5-7/8"
- Temperature control handle with safety lock at 100 °F/ 38°C
- Max. temperature can be set on the trim  
**(ADA)**
- (ADA)

	Matte Black	36 425 970-33 0010
	Chrome	36 425 970-00 0010
	Brushed Platinum	36 425 970-06 0010
	Platinum	36 425 970-08 0010
	Dark Chrome	36 425 970-19 0010
	Light gold	36 425 970-26 0010
	Brushed Light Gold	36 425 970-27 0010
	Brushed Durabronze (23kt Gold)	36 425 970-28 0010
	Brushed Bronze	36 425 970-42 0010
	Brushed Champagne (22kt Gold)	36 425 970-46 0010
	Champagne (22kt Gold)	36 425 970-47 0010
	Brushed Chrome	36 425 970-93 0010
	Brushed Dark Platinum	36 425 970-99 0010

### Required article



- |  |                    |
|--|--------------------|
| <b>Concealed thermostat for one- and two-way outlets -</b> | 35 426 970-90 0010 |
| •Max. rough in depth 5-3/8"                                |                    |
| •Min. rough in depth 3-1/8"                                |                    |

### Recommended article



- |  |               |
|--|---------------|
| <b>xGRID Mounting bracket for drywall construction -</b> | 12 340 970 90 |
|--|---------------|

### Required article



- |  |               |
|--|---------------|
| <b>xGRID Installation track 21.85" -</b> | 12 360 970 90 |
|--|---------------|



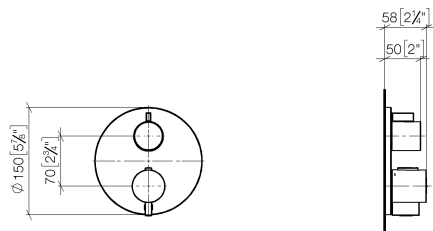


Concealed thermostat with one-way diverter - Matte Black

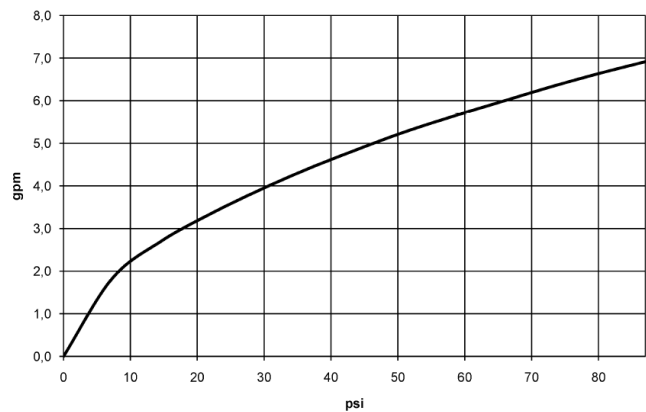
SERIES SPECIFIC

36 425 970    Product version up to 8/24/2020

mm [inches]



Flow rate chart



Codes & Standards

ADA                      ASME A112.18.1                      cUPC





## Concealed thermostat with one-way diverter - Matte Black

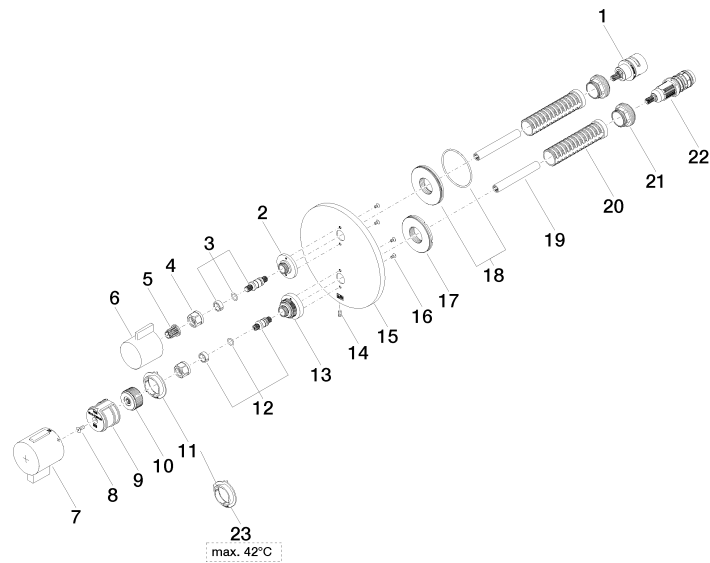
SERIES SPECIFIC

36 425 970 Product version up to 8/24/2020

Certificates and sustainability

IAPMO\_4976 (









## Concealed thermostat with one-way diverter - Matte Black

SERIES SPECIFIC

36 425 970 Product version up to 8/24/2020

### Spare parts list

Number	Item Number	Designation	Number of units	Lead time
13	09 12 12 051-33	base	1.00	30
11	09 28 10 190 90	regulator	1.00	2
10	09 12 12 054 90	base	1.00	2
7	90 17 33 019 00-33	handle	1.00	30
1	90 90 03 166 00 90	top	1.00	2
6	09 20 67 006-33	handle	1.00	30
22	90 15 02 013 00 90	cartridge	1.00	2
21	09 24 04 257 90	nut	2.00	2
23	09 28 10 189 90	regulator	1.00	2
5	90 12 12 002 00 90	fixing cap	1.00	2
18	90 30 01 190 00 90	disc	1.00	2
17	09 30 01 296 90	disc	1.00	2
2	09 12 12 053-33	base	1.00	30
16	09 30 30 157 90	screw	4.00	2
15	09 11 02 242-33	plate	1.00	30
14	09 31 11 134 90	pin	1.00	2
19	90 23 01 124 00 90	sleeve	2.00	2
8	90 30 30 124 00 90	screw	1.00	2
12	04 29 06 024 01-00	spindle	1.00	10
4	90 23 30 023 00 90	nut	2.00	2
9	90 12 12 052 00 90	base	1.00	2
20	90 18 40 077 01 90	spindle	2.00	2
3	04 29 06 111 01-00	spindle	1.00	10