





LULU Concealed thermostat with two-way diverter - Brushed Platinum

LULU


36 426 710    Product version up to 8/24/2020




- Diverter with integrated volume control
  - Cover plate 5-7/8" x 3-1/2"
  - Temperature control handle with safety lock at 100 °F/ 38°C
  - Max. temperature can be set on the trim
  - single flow function only
- (ADA)**
- (ADA)

	Brushed Platinum	36 426 710-06 0010
	Chrome	36 426 710-00 0010


Required article

	<b>Concealed thermostat for one- and two-way outlets -</b> <ul style="list-style-type: none"><li>•Max. rough in depth 5-3/8"</li><li>•Min. rough in depth 3-1/8"</li></ul>	35 426 970-90 0010
---	--	--------------------

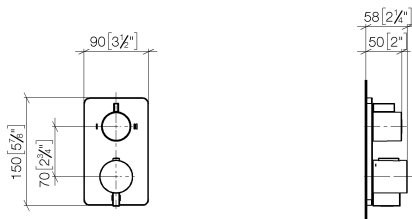
Required article

	<b>xGRID Installation track 21.85" -</b>	12 360 970 90
--	--	---------------

Recommended article

	<b>xGRID Mounting bracket for drywall construction -</b>	12 340 970 90
---	--	---------------

mm [inches]

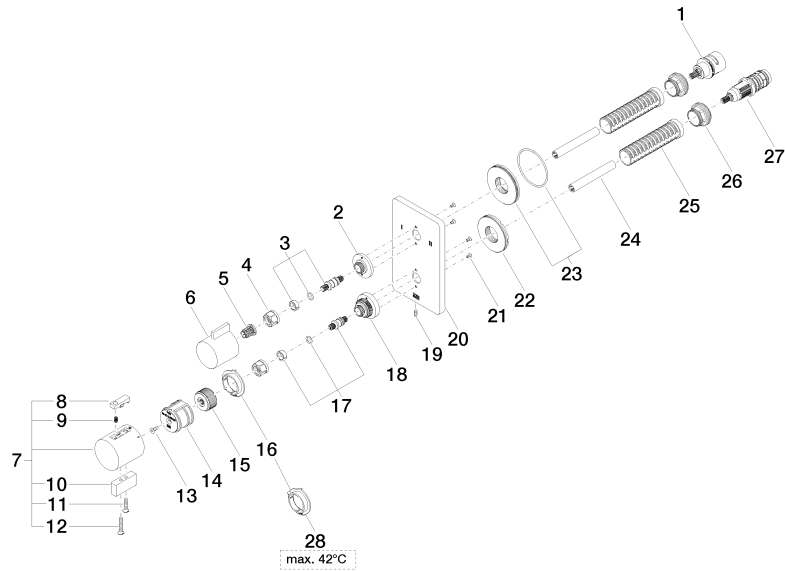


Codes & Standards

ADA	ASME A112.18.1	California Energy Commission (CEC)	cUPC
-----	----------------	------------------------------------	------

Certificates and sustainability

IAPMO\_4976 (



## Spare parts list

Number	Item Number	Designation	Number of units	Lead time
5	90 12 12 002 00 90	fixing cap	1.00	2
15	09 12 12 054 90	base	1.00	2
19	09 31 11 134 90	pin	1.00	2
28	09 28 10 189 90	regulator	1.00	2
9	90 16 02 027 00 90	spring	1.00	2
16	09 28 10 190 90	regulator	1.00	2
2	09 12 12 053-06	base	1.00	10
23	90 30 01 190 00 90	disc	1.00	2
6	09 20 67 006-06	handle	1.00	10
10	09 20 33 006-06	handle	1.00	10
18	09 12 12 051-06	base	1.00	10
12	09 30 30 160-06	screw	1.00	10
27	90 15 02 013 00 90	cartridge	1.00	2
1	90 90 03 163 00 90	diverter	1.00	2
21	09 30 30 157 90	screw	4.00	2
26	09 24 04 257 90	nut	2.00	2
20	09 11 02 264-06	plate	1.00	60
11	09 30 30 159-06	screw	1.00	10
7	90 17 33 004 00-06	handle	1.00	10
22	09 30 01 296 90	disc	1.00	2
4	90 23 30 023 00 90	nut	2.00	2
25	90 18 40 077 01 90	spindle	2.00	2
3	04 29 06 111 01-00	spindle	1.00	10
24	90 23 01 124 00 90	sleeve	2.00	2
13	90 30 30 124 00 90	screw	1.00	2
17	04 29 06 024 01-00	spindle	1.00	10
14	90 12 12 052 00 90	base	1.00	2
8	90 21 33 011 00-13	handle	1.00	2