



DORNBRAUCH YARRE Concealed thermostat - Chrome



DORNBRAUCH
YARRE

36 426 832 Product version from 1/1/2023



- Diverter with integrated volume control
- Cover plate Ø 5-7/8"
- Temperature control handle with safety lock at 100 °F/ 38°C
- Max. temperature can be set on the trim
- single flow function only

(ADA)

	Chrome	36 426 832-00 0010
	Soft Black	36 426 832-69 0010

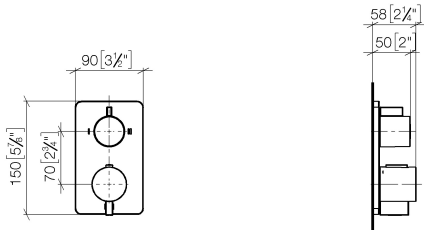


DORNBRACHT YARRE Concealed thermostat - Chrome

DORNBRACHT
YARRE

36 426 832 Product version from 1/1/2023

mm [inches]



Codes & Standards

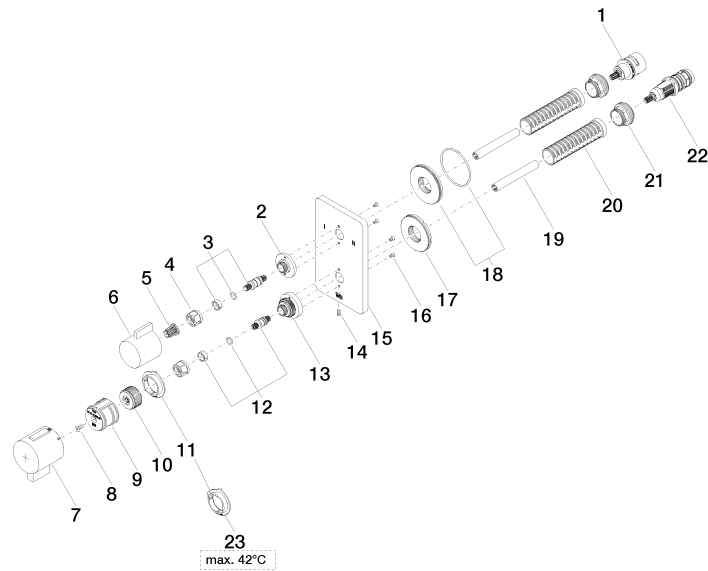
ADA	ASME A112.18.1	California Energy Commission (CEC)	cUPC
-----	----------------	------------------------------------	------

Certificates and sustainability

IAPMO_4976 (

36 426 832 Product version from 1/1/2023

Parts for other
finishes can be found
here: [Soft Black](#)





DORNBRAUCH YARRE Concealed thermostat - Chrome

DORNBRAUCH
YARRE

36 426 832 Product version from 1/1/2023

Spare parts list

Number	Item Number	Designation	Number of units	Lead time
14	09 31 11 134 90	pin	1.00	2
2	09 12 12 053-00	base	1.00	10
7	90 17 33 019 00-00	handle	1.00	10
3	04 29 06 111 01-00	spindle	1.00	10
18	90 30 01 190 00 90	disc	1.00	2
10	09 12 12 054 90	base	1.00	2
12	04 29 06 024 01-00	spindle	1.00	10
1	90 90 03 166 00 90	top	1.00	2
11	09 28 10 190 90	regulator	1.00	2
6	09 20 67 006-00	handle	1.00	10
21	09 24 04 257 90	nut	2.00	2
5	90 12 12 002 00 90	fixing cap	1.00	2
22	90 15 02 013 00 90	cartridge	1.00	2
23	09 28 10 189 90	regulator	1.00	2
17	09 30 01 296 90	disc	1.00	2
16	09 30 30 157 90	screw	4.00	2
13	09 12 12 051-00	base	1.00	10
19	90 23 01 124 00 90	sleeve	2.00	2
9	90 12 12 052 00 90	base	1.00	2
8	90 30 30 124 00 90	screw	1.00	2
20	90 18 40 077 01 90	spindle	2.00	2
4	90 23 30 023 00 90	nut	2.00	2
15	09 11 02 364-00	plate	1.00	60