

TARA Concealed thermostat with two-way diverter - Brushed Dark Brass

TARA

36 426 892 Product version from 5/1/2022



- Diverter with integrated volume control
- Cover plate Ø 5-7/8"
- Temperature control handle with safety lock at 100 °F/ 38°C
- Max. temperature can be set on the trim
- single flow function only

(ADA)

	Brushed Dark Brass	36 426 892-39 0010
	Chrome	36 426 892-00 0010
	Brushed Platinum	36 426 892-06 0010
	Platinum	36 426 892-08 0010
	Brushed Durabronze (23kt Gold)	36 426 892-28 0010
	Matte Black	36 426 892-33 0010
	Brushed Bronze	36 426 892-42 0010
	Brushed Champagne (22kt Gold)	36 426 892-46 0010
	Champagne (22kt Gold)	36 426 892-47 0010
	Brushed Chrome	36 426 892-93 0010
	Brushed Dark Platinum	36 426 892-99 0010

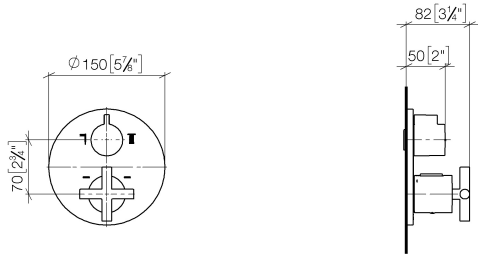


TARA Concealed thermostat with two-way diverter - Brushed Dark Brass

TARA

36 426 892 Product version from 5/1/2022

mm [inches]

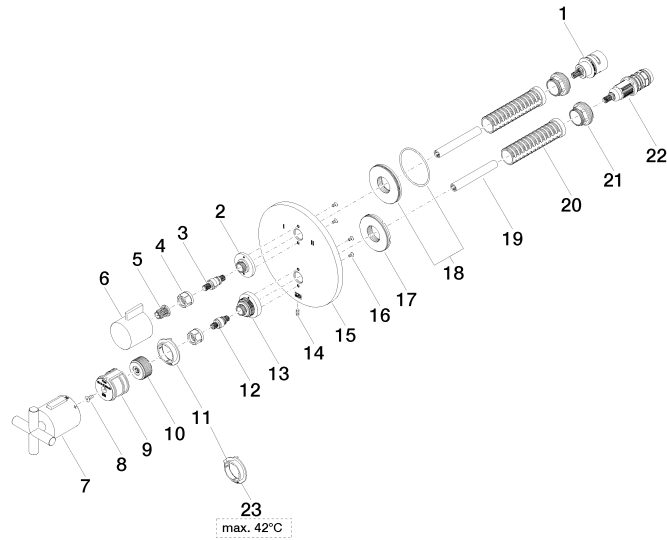


Codes & Standards

ADA	California Energy Commission (CEC)
-----	------------------------------------

36 426 892 Product version from 5/1/2022

Parts for other
finishes can be found
here: [Chrome](#)



TARA Concealed thermostat with two-way diverter - Brushed Dark Brass

TARA

36 426 892 Product version from 5/1/2022

Spare parts list

Number	Item Number	Designation	Number of units	Lead time
14	09 31 11 134 90	pin	1.00	2
4	90 23 30 023 00 90	nut	2.00	2
13	09 12 12 051-39	base	1.00	60
8	90 30 30 124 00 90	screw	1.00	2
22	90 15 02 013 00 90	cartridge	1.00	2
23	09 28 10 189 90	regulator	1.00	2
17	09 30 01 296 90	disc	1.00	2
11	09 28 10 190 90	regulator	1.00	2
9	90 12 12 052 00 90	base	1.00	2
10	09 12 12 054 90	base	1.00	2
16	09 30 30 157 90	screw	4.00	2
3	04 29 06 111 01-39	spindle	1.00	-
Spare part can no longer be ordered, please order the replacement item				
12	04 29 06 024 01-39	spindle	1.00	-
Spare part can no longer be ordered, please order the replacement item				
1	90 90 03 163 00 90	diverter	1.00	2
20	90 18 40 077 01 90	spindle	2.00	2
6	09 20 67 006-39	handle	1.00	60
21	09 24 04 257 90	nut	2.00	2
5	90 12 12 002 00 90	fixing cap	1.00	2
15	09 11 02 266-39	plate	1.00	60
19	90 23 01 124 00 90	sleeve	2.00	2
2	09 12 12 053-39	base	1.00	60
7	90 17 33 022 00-39	handle	1.00	30
18	90 30 01 190 00 90	disc	1.00	2