



WATER FAN horizontal Body spray - Light gold

SERIES-VARIOUS

36 512 979 Product version from 10/1/2023

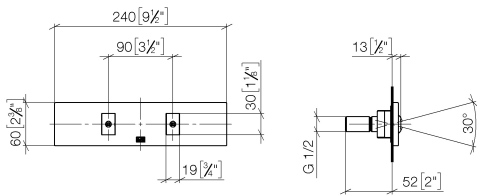


- Pressurized cascade stream
- Horizontal jet
- Cover plate 9-1/2" x 2-3/8"
- Adjustable jet
- 1/2" connection
- Water flow rate limited to max. 1.8 gpm
- This product reduces water consumption by 28% (compared to requirements of EPA Act '92)
- This product contributes to meeting the requirements of the LEED® Green Building Rating
- This product can help a building meet the requirements of Green Building Rating Systems, e.g. LEED®, BREEAM®, DGNB

	Light gold	36 512 979-26 0010
	Chrome	36 512 979-00 0010
	Brushed Platinum	36 512 979-06 0010
	Platinum	36 512 979-08 0010
	Dark Chrome	36 512 979-19 0010
	Brushed Light Gold	36 512 979-27 0010
	Brushed Durabrass (23kt Gold)	36 512 979-28 0010
	Matte Black	36 512 979-33 0010
	Brushed Bronze	36 512 979-42 0010
	Brushed Champagne (22kt Gold)	36 512 979-46 0010
	Champagne (22kt Gold)	36 512 979-47 0010
	Brushed Chrome	36 512 979-93 0010
	Brushed Dark Platinum	36 512 979-99 0010

36 512 979 Product version from 10/1/2023

mm [inches]



Codes & Standards

California Energy
Commission
(CEC)

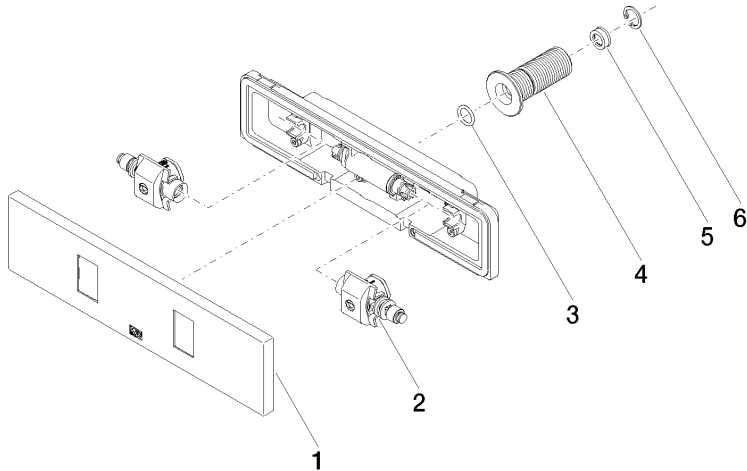
36 512 979

Product version from 10/1/2023

Parts for other

finishes can be found

here: [Chrome](#)



Spare parts list

Number	Item Number	Designation	Number of units	Lead time
6	09 16 01 014 90	ring	1.00	2
2	90 31 10 012 00 90	insert	1.00	2
3	09 14 10 003 90	seal	1.00	2
1	90 27 99 002 00-26	insert	1.00	30
4	09 24 05 015 90	nipple	1.00	2
5	09 23 01 165 90	flow reducer	1.00	2