



- AQUAPRESSURE FLOW, max. flow rate 1.8 gpm (at 3 bar)
- Adjustable jet
- Function from: gpm

Technical data:

- Cover plate 4-3/4" x 2-3/8"
- 1/2" connection

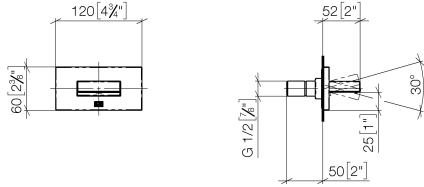
Notes:

- This product reduces water consumption by 28% (compared to requirements of EPA '92)
- This product can help a building meet the requirements of Green Building Rating Systems, e.g. LEED®, BREEAM®, DGNB
- This product contributes to meeting the requirements of the LEED® Green Building Rating

	Brushed Dark Brass	36 514 979-39 0010
	Chrome	36 514 979-00 0010
	Brushed Platinum	36 514 979-06 0010
	Platinum	36 514 979-08 0010
	Dark Chrome	36 514 979-19 0010
	Light gold	36 514 979-26 0010
	Brushed Light Gold	36 514 979-27 0010
	Brushed Durabronze (23kt Gold)	36 514 979-28 0010
	Matte Black	36 514 979-33 0010
	Brushed Bronze	36 514 979-42 0010
	Brushed Champagne (22kt Gold)	36 514 979-46 0010
	Champagne (22kt Gold)	36 514 979-47 0010
	Brushed Chrome	36 514 979-93 0010
	Brushed Dark Platinum	36 514 979-99 0010

36 514 979 Product version from 10/1/2023

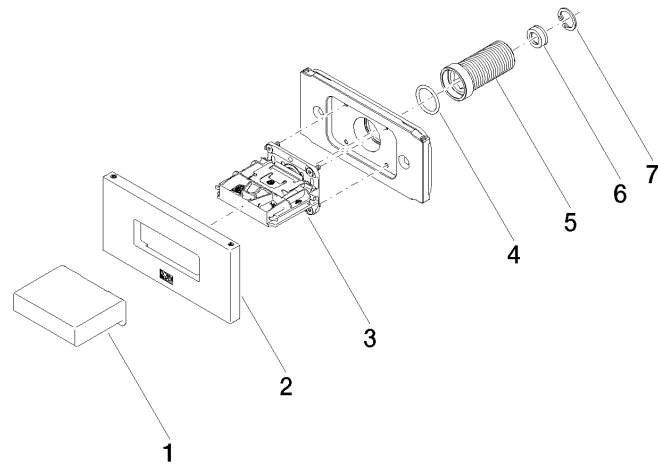
mm [inches]



Codes & Standards

California Energy
Commission
(CEC)

Parts for other
finishes can be found
here: [Chrome](#)



Spare parts list

Number	Item Number	Designation	Number of units	Lead time
7	09 16 01 014 90	ring	1.00	2
3	90 29 03 088 00 90	insert	1.00	2
5	09 24 04 336 90	nipple	1.00	2
6	09 23 01 165 90	flow reducer	1.00	2
2	90 27 97 041 00-39	rosette	1.00	30
4	90 14 10 010 00 90	seal	1.00	2
1	09 17 01 230-39	casing	1.00	60